

ZyXEL VLC1124A V3.50(LQ.1)

Release Note/Manual Supplement

Date: June 16, 2004

This document describes the features in the VLC1124A product for its 3.50(LQ.1) release.

Support Platforms:

ZyXEL VLC1124A V3.50(LQ.1) supports models: ZyXEL VLC1124A

Version:

ZyNOS Version: V3.50(LQ.1) | 06/15/2004 17:31:57

BootBase Version: V1.02(VLC1124A) | 06/15/2004 17:31:37

Known Issue:

1. Ethernet AC101 PHY are not compatible with specific PHY.
2. Cannot generate pause frame when multiple vdsl ports send packets to uplink port.
3. Bandwidth control works only when Flow control enabled.
4. When GVRP enable, leave timer and leave all timer should be increased when lots of dynamic VLAN join.
5. Per port PVID setting is limited in set range(1-255, 256-511,..., 3840-4094). If port 1 is set PVID in one of the set range, the other ports PVID also should be set to the same set range.
6. Some MIB browser will keep original community setting. MIB browser should be restart when changing community setting.
7. Default rate adaptive setting change from fixed mode to rate adaptive decrease mode.

Bug Fix:

1. HELP page link lost.
2. MIB counter display error.

Features:

1. VDSL Common Setup

Providing mechanisms for setting VDSL system-wide parameters, including band plans of ETSI 997, ANSI 998, 10BaseS, and Power Back Off (PBO) enable/disable.

Web Configurator - Microsoft Internet Explorer

檔案(F) 編輯(E) 檢視(V) 我的最愛(A) 工具(T) 說明(H)

← 上一頁 → 搜尋 我的最愛 網址(D) http://172.21.100.37

ZyXEL Status

MENU

- Basic Setting
- Advanced Application
- Routing Protocol
- Management
- System Info
- General Setup
- Switch Setup
- IP Setup
- Port Setup
- VDSL Common Setup**
- VDSL Profile Setup

VDSL Common Setup

Band Plan ☐ ETSI 997 ☐ ANSI 998 ☒ 10BaseS

PBO ☒ Enable

Apply Cancel

2. VDSL Profile Management:

The profile management is used for creating/modifying/deleting VDSL profiles used by each ports for different VDSL parameters. Currently we provide maximum 24 profiles for all system. One of the profiles named “DEFVAL” is the default profile of the system and can not be deleted. Any changes of the profiles will cause the VDSL port retrain.

Web Configurator - Microsoft Internet Explorer

檔案(F) 編輯(E) 檢視(V) 我的最愛(A) 工具(T) 說明(H)

← 上一頁 → 搜尋 我的最愛 網址(D) http://172.21.100.37

ZyXEL Status

MENU

- Basic Setting
- Advanced Application
- Routing Protocol
- Management
- System Info
- General Setup
- Switch Setup
- IP Setup
- Port Setup
- VDSL Common Setup
- VDSL Profile Setup**

VDSL Profile Setup

Name DEFVAL

Downstream Payload Rate 12.50Mbps

Upstream Payload Rate 12.50Mbps

Rate Adaptive ☒ Fixed Mode ☐ Rate Adaptive Decrease Mode

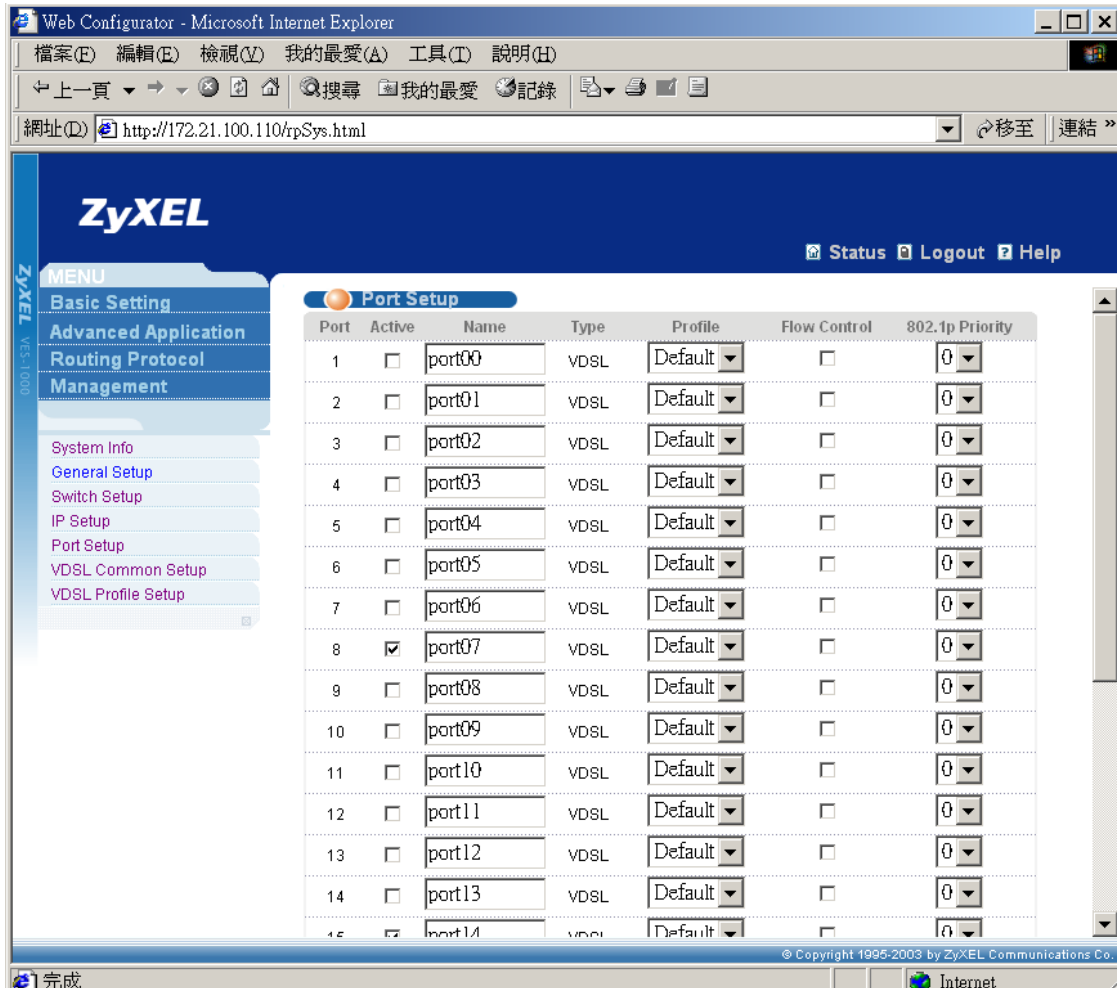
Add Cancel Clear

Name	Line Rate	Applied Ports	Delete
DEFVAL	12M/12M	1-24	<input type="checkbox"/>

Delete Cancel

3. VDSL Port Profile Assignment

In the Port Setup page, the user can assign which profile to be used for each port.



Firmware Upgrade:

The VLC1124A uses FTP to upgrade firmware in run-time through its built-in FTP server. You can use any FTP client (for example, [ftp.exe](#) in Windows) to upgrade VLC1124A. The upgrade procedure is as follows:

Upgrade VLC1124A FW:

```
C:\> ftp <VLC1124A IP address>
User : <Enter>
Password: 1234
230 Logged in
ftp> put 350LQ1C0.bin ras
ftp> bye
```

Where

- User name : just press <Enter>
- Password : the management password, 1234 by default
- 350LQ1C0.bin : the name of firmware file you want to upgrade
- ras : the internal firmware name in VLC1124A

Configuration Upgrade:

The VLC1124A uses FTP to upgrade configuration in run-time through its built-in FTP server. You can use any FTP client (for example, [ftp.exe](#) in Windows) to upgrade VLC1124A . The upgrade procedure is as follows:

Upgrade VLC1124A configuration:

```
C:\> ftp <VLC1124A IP address>
User : <Enter>
Password: 1234
230 Logged in
ftp> put 350LQ1C0.rom rom-0
ftp> bye
```

Where

- User name : just press <Enter>
- Password : the management password, 1234 by default
- 350LQ1C0.rom : the name of configuration file you want to upgrade
- rom-0 : the internal configuration name in VLC1124A

Commands Table:

- [Partial VDSL Profile and VDSL Port commands are not fully supported](#)

sys

snmp	GetCom	[<community>		Set or view community of
	munity]		GetRequest.
	setComm	[<community>		Set or view community of
	unity]		SettRequest.
	trustedHo	[<hsot>]		Set or view trusted host.
	st			
	trapCom	[<community>		Set or view community of Trap
cluster	munity]		
	trapDest	[<destination>		Set or view trap server.
]		
	disp			View snmp setting.
	active	<name>		Active cluster
	inactive	<name>		Inactive cluster
	add	<MAC addr>	<password>	Add a member into cluster
			>	
	remove	<MAC addr>		Remove a member from cluster.

	showMe		Show member list
	meber		
	showCan		Show candidate list
	didate		
	status		Show cluster status
config	save		Save configuration
Switch commands: The following commands are under “ sys switch “			
garp	status		show garp timer status
	timer	<join timer(ms) <leave timer(ms)> <leave all timer(ms)>	set garp timer <join timer> <leave timer> <leave all timer>
gvrp	status		show gvrp status
	enable		enable gvrp function
	disable		disable gvrp function
qos	defpri	<port> [<0..7>]	set the default ingress User Priority for this port <port>.
	map	<0..7> [<queue>]	User Priority to Traffic Class mapping.
vlan1	port	status <port>	show port <port> VLAN information.
q		defaultVID <port> <VID>	set defaultVID<VID> of this port<port>.
		accept <port> <all tagged>	set acceptFrameType of this port.
		gvrp <port> <enable disable>	Enable/disable the gvrp function of this port <port>.
	svlan	cpu <VLAN ID>	Set VLAN ID of cpu.
		setentry <name> <VID> <port> <adctl> <<tagctl>	set static entry.<VID>
		delentry <VID>	delete static entry<VID>
		active <VID>	active the static entry with <VID>
		inactive <VID>	inactive the static entry with <VID>
		list	show the static entry table.
	vlan	list <all vid start_vid end_vid>	Show vlan lq current table.
driver	count	disp	Show the switch NDIS level counters(CPU interface)
		clear	Clear the switch NDIS level counters(CPU interface)
rstp	bridge		Please reference to 802.1w
		enable	Enable RSTP

	disable		Disable RSTP
	priority	<priority>	System Priority
	maxAge	<max age>	Max age timer
	helloTim	<hello time>	Hello timer
	e		
	forwardD	<forward delay	Forward delay time
	elat	time>	
	version	<STP:0 RSTP:2	Operation Mode
		>	
port	enable	<Port_NO>	Enable this port under RSTP protocol
	disable	<Port_NO>	Disable this port under RSTP protocol
	pathCost	<Port_NO>	Cost of this path
	priority	<Port_NO>	Priority
	edgePort	<Port_NO>	If this port is an edge port
	p2pLink	<Port_NO>	Whether the Port concerned can only be connected to exactly one other Bridge or can be connected to two or more Bridges
	mcheck	<Port_NO>	802.1w chapter 17.18.10
lacp			Please reference to 802.3ad
agg			Display aggregation information
port	enable	<Port_NO>	
	disable	<Port_NO>	
	status	<Port_NO>	
	actorAd		Actor means local side
	m		
	activity	[Port_NO [0:passive 1:active]	
]	
	display	[Port_NO	
]	
	key	[Port_NO [Key]	
]	
	priority	[Port_NO [Priority]	
]	
	timeout	[Port_NO [0:long_timeout 1:s	
		hort_timeout]	
	status		
	keymgnt	[on off]	
	sysPriorit	<priority>	
	y		
dot1x			Please reference to 802.1x
	enable		Enable dot1x
	disable		Disable dot1x
	status		Show dot1x global status
	port		

	enable	<Port_NO>			Enable this port
	disable	<Port_NO>			Disable this port
	reauth	<Port_NO>	<on off>		Re-authentication
	reauthPeriod	<Port_NO>	<value>		Re-authentication period
	iod				
	status	<Port_NO>			Port status
set					
	auth	<profile radius>			Set authentication method
	portcontrol	<port-no>	<auto auth unauth>		Set port authentication status
radius					
	server	<IP>			Server IP
	secret	<secret>			Secret key
	port	<port>			Server port
	show				Display server setting
profile					(Won't be saved in flash)
	add	<username>	<passwd>		Add a user profile
	delete	<idx>			Delete a user profile
	list				List profile setting
class					
	display				Class setting
	l2set	<src port>	<src MAC>	<dest port>	display run-time status
			<src vid>	<dest MAC>	Set src/dest port/MAC combination
	del	<class id>		<dest vid>	Delete this class
bmstorm					
	disable				Broadcast Storm Control
	type	<type>			Clear current run-time settings
	basis	<type>			Broadcast/Multicast/Both
	display	[index]			Pkt/Byte
	interval	[value]			Display ports setting
					Set/display monitor interval
	set	<port>	<dhreshold>	<direction>	Threshold:# of pkt can be passed in the interval
					Direction:ingress/egress
	del	<index>			Disable on this port
mac					
	static				Static MAC setting
					Clear current run-time settings
	display	[port]			display run-time status
	set	<port>	<MAC Addr.>	<vid>	Set static MAC of the port
	del	<port>	<MAC Addr.>	<vid>	Delete static MAC of the port
filter					
	disable				MAC filter setting
					Clear current run-time

	display					settings
	set	<src port>	<src MAC> <src vid>	<dest port>	<dest MAC> <dest vid>	display run-time status Set src/dest port/MAC combination (Use "*" as "don't-care" in each field)
mirror						
	disable					Mirror setting Clear current run-time settings
	display					display run-time status
	set	<src port>	<src MAC> <src vid>	<dest port>	<dest MAC> <dest vid>	Set src/dest port/MAC combination for mirror settings (Use "*" as "don't-care" in each field)
		<input output both>				
	port	<port>				What port mirror to
bw						
	disable					Bandwidth Control setting Clear current run-time settings
	display					display run-time status
	set	<src port>	<src MAC> <src vid>	<dest port>	<dest MAC> <dest vid> <Max BW>	Set src/dest port/MAC combination (Use "*" as "don't-care" in each field)
trunk						
	disable					Trunking setting Clear current run-time settings
	display					display run-time status
	set	<group>	<# ports>			Set trunking group
	del	<group>				del trunking group
monit	Set					Set voltage, temperature
or	Status					Show Monitor status
Ip	dhcp	<Iface>	mode	<none client>		Change DHCP mode for interface <Iface>
			status			Show DHCP status
			client	release		Release the IP address
				renew		Renew the IP address.

● Following commands are not fully supported

Profile commands: The following commands are under "vdsi profile "

list					List profile
create	<profile name>				Create a new profile with default setting
delete	<profile name>				Delete a profile
apply	<profile name>	<port number all>			Apply current profile setting to other port
display	<profile name>				Display setting of current profile
set	<profile name>	name	<profile name>		Set the profile name of current profile
		uspayloadrate	max		Set the max upstream payloadrate
			min		Set the min upstream payloadrate
		dspayloadrate	max		Set the max downstream payloadrate
			min		Set the min downstream payloadrate
		rate-adaption	fix		Set rate-adaption mode to fixed mode
			adaption		Set rate-adaption mode to adaption mode
		snr	max		Set value of max snr
			min		Set value of min snr
			upstream	target	Set value of upstream target snr
			downstream	target	Set value of downstream target snr
		compatible-mode	adsl		Set to adsl compatible-mode
			pots		Set to pots compatible-mode
		usinterdelay			Set value of upstream interleave delay
		dsinterdelay			Set value of downstream interleave delay
		rft	disable		Set rft to disable
			standard	annex_f	Set rft to annex f standard
				etsi	Set rft to etsi standard
				t1e1	Set rft to t1e1 standard
vdsl	port	<port number all>	enable		Set the port to line enable
			disable		Set the port to line disable
			retrain		Re-train operation for the port
			Re-provision		Re-provision for the port
			reset		Reset for the port
			remote-reset		Remote-reset CPE for the port
					Send EOC loopback packet for the remote test
			remote-test		
			config	Display	Display config setting
			status	Display	Display current status for the port
			counter	Clear	Clear counter for the port
vdsl	bandplan				Set bandplan for vdsl system configuration

Pbo	enable	Set PBO to enable
	disable	Set PBO to disable

MIB support:

The following is the private vdsl related MIB currently supported by VLC1124A:

- accessSwitchVdslLineTable
- accessSwitchVdslVtuoPhysTable
- accessSwitchVdslVturPhysTable
- accessSwitchVdslVtuoInventoryTable
- accessSwitchVdslVturInventoryTable
- accessSwitchVdslVtuoIntervalTable
- accessSwitchVdslVturIntervalTable
- accessSwitchVdslLineConfProfileTable
- accessSwitchVturDevTable
- accessSwitchVturConfTable
- accessSwitchVturStateTable
- accessSwitchVdslVtuoPhyMCMTTable
- accessSwitchVdslVturPhyMCMTTable

Test Items:

1. VDSL profile create/modify/delete, and assign the profile to the specific VDSL port.
2. VDSL port retrain.
3. Load factory default.
4. IP Setting