

# *Prestige 202H Plus*

*ISDN Internet Access Router*

## *Quick Start Guide*

Version 3.40  
12/2004



# Table of Contents

<b>1</b>	<b>Introducing the Prestige.....</b>	<b>3</b>
<b>2</b>	<b>Hardware Installation.....</b>	<b>4</b>
	2.1 <i>Rear Panel .....</i>	<i>4</i>
	2.2 <i>The Front Panel LEDs.....</i>	<i>4</i>
<b>3</b>	<b>Setting Up Your Computer's IP Address.....</b>	<b>5</b>
	3.1 <i>Windows 95/98/Me.....</i>	<i>6</i>
	3.2 <i>Verifying Your Computer's IP Address.....</i>	<i>8</i>
	3.3 <i>Windows 2000/NT/XP.....</i>	<i>8</i>
	3.4 <i>Checking/Updating Your Computer's IP Address.....</i>	<i>9</i>
<b>4</b>	<b>Configuring Your Prestige.....</b>	<b>10</b>
	4.1 <i>Accessing Your Prestige Via Web Configurator .....</i>	<i>10</i>
	4.2 <i>Common Screen Command Buttons.....</i>	<i>12</i>
	4.3 <i>Using the Wizard to Configure for Internet Access.....</i>	<i>12</i>
	4.4 <i>Test Your Internet Connection .....</i>	<i>16</i>
<b>5</b>	<b>Advanced Configuration.....</b>	<b>16</b>
	5.1 <i>Network Address Translation Overview.....</i>	<i>16</i>
	5.2 <i>Configuring SUA Server .....</i>	<i>16</i>
	5.3 <i>Firewall Overview.....</i>	<i>18</i>
	5.4 <i>Enabling the Firewall .....</i>	<i>19</i>
	5.5 <i>Procedure for Configuring Firewall Rules .....</i>	<i>19</i>
	5.6 <i>Configuring Source and Destination Addresses.....</i>	<i>23</i>
<b>6</b>	<b>Troubleshooting.....</b>	<b>24</b>

# 1 Introducing the Prestige

The Prestige 202H Plus is an ISDN Internet access router that offers a complete Internet access solution.

The prestige is equipped with two integrated phone ports for connecting analog phones and fax devices. It also provides advanced calling features, such as call waiting, three-way calling, call transferring and forwarding.

By integrating NAT, firewall, VPN capability and a four-port switch, the Prestige 202H Plus is a complete security solution that protects your Intranet and efficiently manages data traffic on your network.

You should have an Internet account already set up and have been given most of the following information.

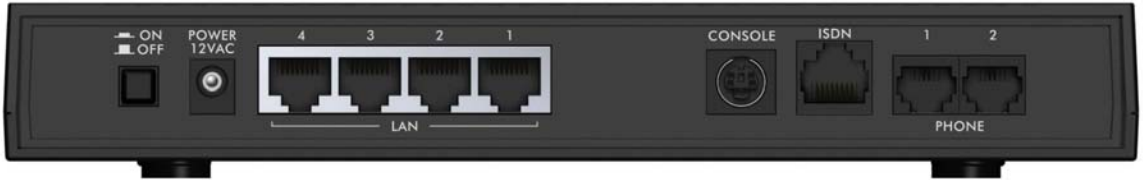
INTERNET ACCOUNT INFORMATION
Your device's WAN IP Address (if given): _____
DNS Server IP Address (if given): Primary _____, Secondary _____
Your ISDN Phone Number: _____
ISP Name: _____
ISP Telephone Number: _____
Login Name: _____
Password: _____
DNS Server Address(es): _____

## Certifications

1. Go to [www.zyxel.com](http://www.zyxel.com)
2. Select your product from the drop-down list box on the ZyXEL home page to go to that product's page.
3. Select the certification you wish to view from this page.

## 2 Hardware Installation

### 2.1 Rear Panel



LABEL	DESCRIPTION
ON/OFF	Turn the router on and off by pushing the power button (in is ON, out is OFF).
POWER 12VAC	Connect to a power source using the power adapter for your region (see your <i>User's Guide</i> ).
LAN 1-4	Connect to computer(s) / external hub(s) using an Ethernet cable. The LAN ports are auto-crossover, which means either a crossover or straight-through Ethernet cable will do in either case.
CONSOLE	Connect the male end of the console cable to the console port of the router and the female end to a serial port (COM1, COM2 or other COM port) of your computer.
ISDN	Connect the router to the ISDN network using the included ISDN cable. Plug one end of the cable into the port labeled <b>ISDN</b> and the other to the ISDN wall jack.
PHONE 1-2	Connect your analog phone devices to these ports via R-J11 cables.

### 2.2 The Front Panel LEDs

Turn on the Prestige by pressing the **ON/OFF** button.

The **PWR/SYS** LED blinks green while performing a system test and then stays on steady green if the testing is successful. If the router senses a low voltage power supply, the **PWR/SYS** LED turns on steady red. The **LAN**, and **ISDN** LEDs turn on if they are properly connected.



LED	COLOR	STATUS	DESCRIPTION
PWR/SYS	Green	On	The Prestige is receiving power and functioning properly.
		Blinking	The Prestige is rebooting.
	Red	On	Power to the Prestige is too low.
		Off	The system is not ready or has malfunctioned.
LAN 1-4	Green	On	The Prestige has a successful 10Mb Ethernet connection.
		Blinking	The Prestige is sending/receiving data.
	Amber	On	The Prestige has a successful 100Mb Ethernet connection.
ISDN LNK	Green	On	The ISDN link is connected to an ISDN switch and ready to send or receive data.
		Off	The ISDN link is not connected to an ISDN switch or has not yet initialized.
ISDN B1, B2	Green	On	The ISDN B1(B2) line is sending or receiving data.
		Off	The ISDN B1(B2) line is not sending or receiving data..
Phone 1-2	Green	On	The telephone(s) connected to this port is (are) in use.
		Blinking	The telephone(s) connected to this port is (are) ringing.
		Off	The telephone(s) connected to this port is (are) not in use.

### 3 Setting Up Your Computer's IP Address

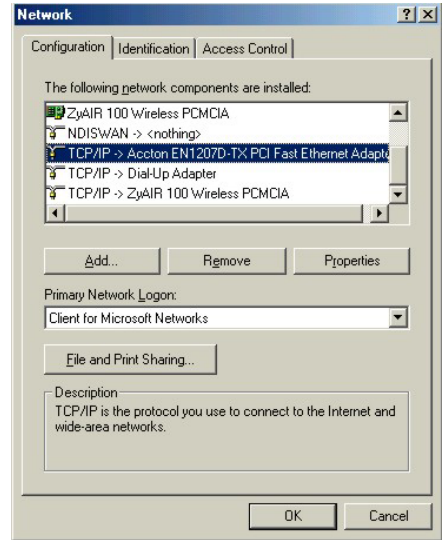
**Skip this section if your computer is already set up to accept a dynamic IP address. This is the default for most new computers.**

The Prestige is already set up to assign your computer an IP address. Use this section to set up your computer to receive an IP address or assign it a static IP address in the 192.168.1.2 to 192.168.1.254 range with a subnet mask of 255.255.255.0. This is necessary to ensure that your computer can communicate with your Prestige.

Your computer must have an Ethernet card and TCP/IP installed. TCP/IP should already be installed on computers using Windows NT/2000/XP, Macintosh OS 7 and later operating systems.

### 3.1 Windows 95/98/Me

Click **Start**, **Settings**, **Control Panel** and double-click the **Network** icon to open the **Network** window.



The **Network** window **Configuration** tab displays a list of installed components. You need a network adapter, the TCP/IP protocol and Client for Microsoft Networks.

If you need the adapter:

- a. In the **Network** window, click **Add**.
- b. Select **Adapter** and then click **Add**.
- c. Select the manufacturer and model of your network adapter and then click **OK**.

If you need TCP/IP:

- a. In the **Network** window, click **Add**.
- b. Select **Protocol** and then click **Add**.
- c. Select **Microsoft** from the list of **manufacturers**.
- d. Select **TCP/IP** from the list of network protocols and then click **OK**.

If you need Client for Microsoft Networks:

- a. Click **Add**.
- b. Select **Client** and then click **Add**.
- c. Select **Microsoft** from the list of manufacturers.
- d. Select **Client for Microsoft Networks** from the list of network clients and then click **OK**.

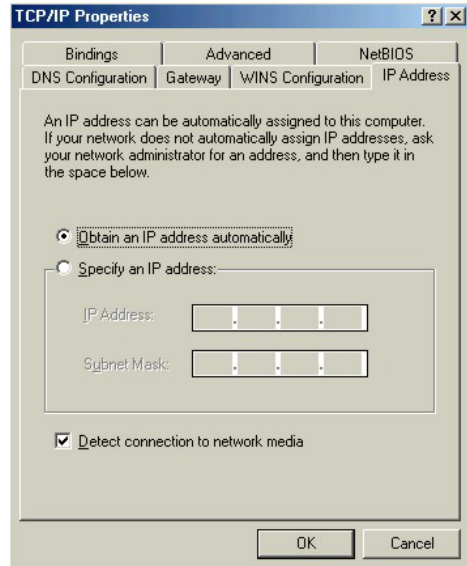
- e. Restart your computer so the changes you made take effect.

In the **Network** window **Configuration** tab, select your network adapter's TCP/IP entry and click **Properties**.

1. Click the **IP Address** tab.

-If your IP address is dynamic, select **Obtain an IP address automatically**.

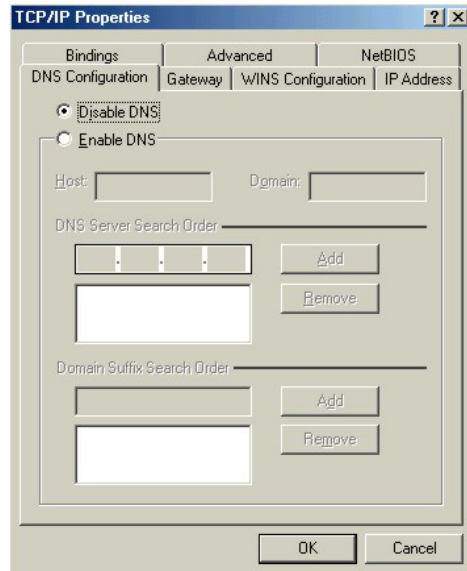
-If you have a static IP address, select **Specify an IP address** and type your information into the **IP Address** and **Subnet Mask** fields.



2. Click the **DNS Configuration** tab.

-If you do not know your DNS information, select **Disable DNS**.

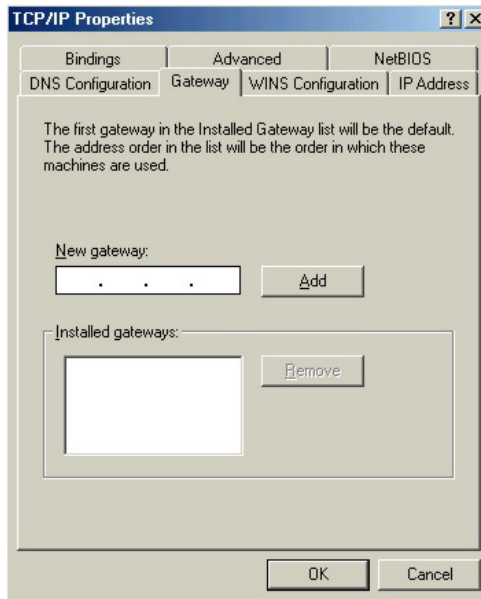
-If you know your DNS information, select **Enable DNS** and type the information in the fields below (you may not need to fill them all in).



3. Click the **Gateway** tab.

-If you do not know your gateway's IP address, remove previously installed gateways.

-If you have a gateway IP address, type it in the **New gateway field** and click **Add**.



4. Click **OK** to save and close the **TCP/IP Properties** window.
5. Click **OK** to close the **Network** window. Insert the Windows CD if prompted.
6. Turn on your Prestige and restart your computer when prompted.

## 3.2 Verifying Your Computer's IP Address

1. Click **Start** and then **Run**.
2. In the **Run** window, type "winipcfg" and then click **OK** to open the **IP Configuration** window.
3. Select your network adapter. You should see your computer's IP address, subnet mask and default gateway.

## 3.3 Windows 2000/NT/XP

1. In Windows XP, click **start**, **Control Panel**. In Windows 2000/NT, click **Start**, **Settings**, **Control Panel**.
2. In Windows XP, click **Network Connections**.  
In Windows 2000/NT, click **Network and Dial-up Connections**.
3. Right-click **Local Area Connection** and then click **Properties**.
4. Select **Internet Protocol (TCP/IP)** (under the **General** tab in Win XP) and click **Properties**.



5. The **Internet Protocol TCP/IP Properties** screen opens (the **General** tab in Windows XP).

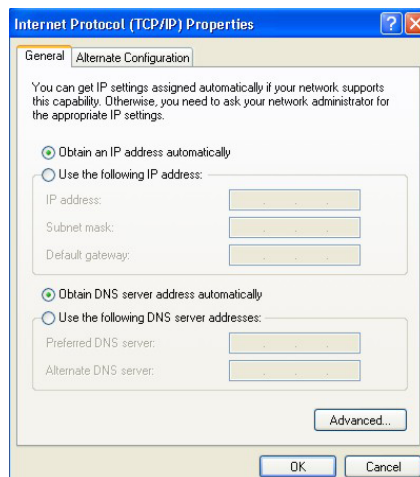
- To have your computer assigned a dynamic IP address, click **Obtain an IP address automatically**.

If you know your DNS sever IP address(es), type them in the **Preferred DNS server** and/or **Alternate DNS server** fields.

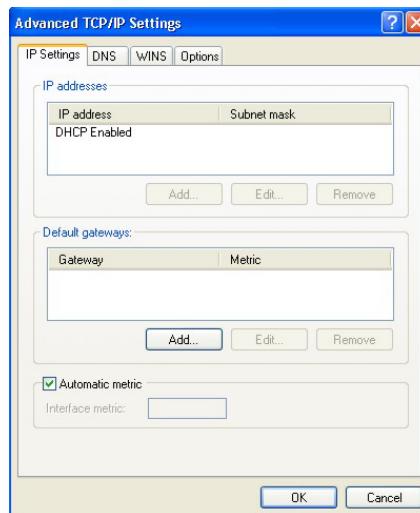
-To configure a static IP address, click **Use the following IP Address** and fill in the **IP address** (choose one from 192.168.1.2 to 192.168.1.254), **Subnet mask** (255.255.255.0), and **Default gateway** (192.168.1.1) fields.

Then enter your DNS server IP address(es) in the **Preferred DNS server** and/or **Alternate DNS server** fields.

If you have more than two DNS servers, click **Advanced**, the **DNS** tab and then configure them using **Add**.



6. Click **Advanced**. Remove any previously installed gateways in the **IP Settings** tab and click **OK** to go back to the **Internet Protocol TCP/IP Properties** screen.



7. Click **OK** to close the **Internet Protocol (TCP/IP) Properties** window.
8. Click **OK** to close the **Local Area Connection Properties** window.

### 3.4 Checking/Updating Your Computer's IP Address

1. In the computer, click **Start**, **(All) Programs**, **Accessories** and then **Command Prompt**.
2. In the **Command Prompt** window, type "ipconfig" and then press **ENTER** to verify that your computer's IP address is in the correct range (192.168.1.2 to 192.168.1.254) with subnet mask 255.255.255.0. This is necessary in order to communicate with the Prestige.

Refer to your *User's Guide* for detailed IP address configuration for other Windows and Macintosh computer operating systems.

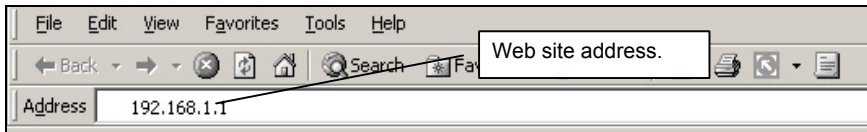
## 4 Configuring Your Prestige

Choose one of these methods to access and configure the Prestige. This *Quick Start Guide* shows you how to use the web configurator wizard only. See your *User's Guide* for background information on all Prestige features and SMT configuration. Click the web configurator online help for screen-specific web help.

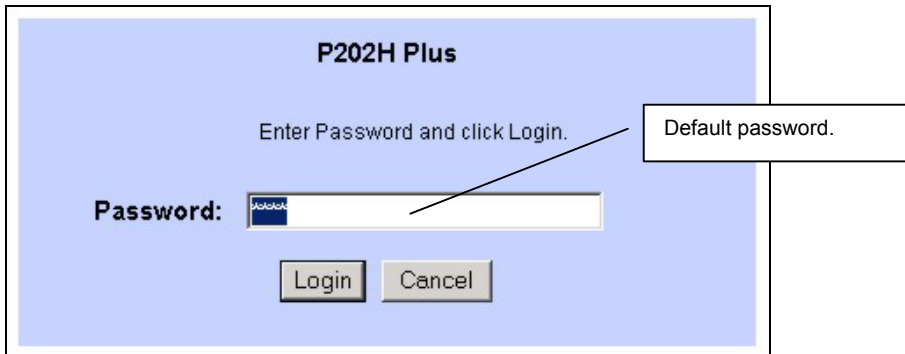
- Web Configurator
- SMT (System Management Terminal). Access the SMT via:
  - Console port using terminal emulation software
  - LAN or WAN using Telnet

### 4.1 Accessing Your Prestige Via Web Configurator

1. Launch your web browser. Enter “192.168.1.1” as the web site address.



2. Type the password (“1234” is the default), then click **OK** to proceed to the next screen. In some versions, the default password appears automatically - if this is the case, click **Login**.



3. It is highly recommended you change the default password. Enter a new password, retype it to confirm and click **Apply**; alternatively click **Ignore** if you do not want to change the password now

**If you do not change the password, the following screen appears every time you log in.**

**Use this screen to change the password.**

We recommend that you personalize the system administrator password by changing it to something besides the default '1234'.

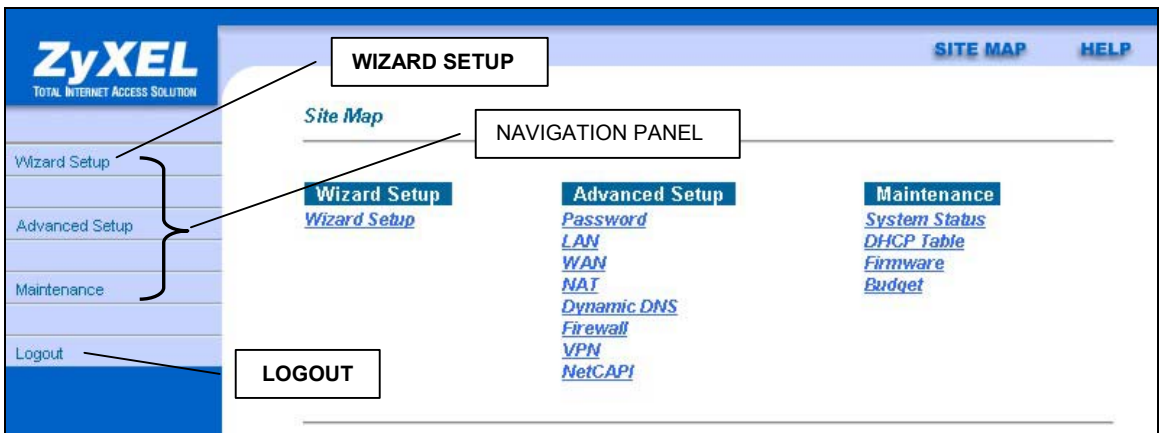
The administrator password should must be between 1 - 30 characters.

**New Password:**

**Retype to Confirm:**

4. You should now see the **Site Map** screen.

- Click **Wizard Setup** to begin a series of screens to help you configure your Prestige for the first time.
- Click a link under **Advanced Setup** in the navigation panel to configure advanced Prestige features, such as Password setup, WAN and LAN settings, NAT, Dynamic DNS, Firewall, and VPN.
- Click **MAINTENANCE** in the navigation panel to see Prestige performance statistics, upload firmware and back up, restore or upload a configuration file.
- Click **LOGOUT** when you have finished a Prestige management session. The Prestige automatically logs you out if it is left idle for five minutes; press **ENTER** to display the **Login** screen again and then log back in.



## 4.2 Common Screen Command Buttons

The following table shows common command buttons found on many web configurator screens.

Back	Click <b>Back</b> to return to the previous screen.
Apply	Click <b>Apply</b> to save your changes back to the Prestige.
Reset/Cancel	Click <b>Reset</b> or <b>Cancel</b> to begin configuring this screen afresh.

## 4.3 Using the Wizard to Configure for Internet Access

1. Click **Wizard Setup** in the main menu to display the first wizard screen.

Select **B Channel Usage** from the dropdown box. In general, this will be **Switch/Switch** (default). If you are only using one B channel (e.g., your router is sharing the ISDN line with another device), then select **Switch/Unused**. If your second B channel is a leased line, select **Switch/Leased**.

In **ISDN Data**, enter the phone number (up to 25 digits) assigned to you by your ISDN service provider. If it's necessary to dial an additional number to reach an outside line, enter it in the **Outside Line Prefix** field. Enter the subaddress and telephone number assigned to A/B Adapter 1/2 (PHONE1/2).

The **Incoming Phone Number Matching** setting governs how incoming calls are routed.

If you select **Multiple Subscriber Number (MSN)** or **Called Party Subaddress**, a call (either ISDN data or analog) is routed to the port that matches the dialed number; if no match is found, the call is dropped. Global calls are always ignored. A global call is an incoming analog call where the switch did not send the dialed number. This happens most often when the call originates from an analog telephone line.

If you select **Don't Care**, then all data calls are routed to the Prestige itself. Analog calls, however, are routed to either A/B adapter 1 or 2, or simply ignored, depending on the **Analog Call Routing** field. If **Incoming Phone Number Matching** is **Don't Care** and **Analog Call Routing** is either **A/B Adapter 1**, **A/B Adapter 2** or **Both**, then the Prestige uses **Global Analog Call** to decide how to handle global calls. If you set **Global Analog Call** to **Accept**, then global calls are routed to the port according to the **Analog Call Routing** setting; if you set **Global Analog Call** to **Ignore**, then the Prestige ignores all global calls. If **Analog Call Routing** is **Ignore** to begin with, then all analog calls, including global calls, are ignored.

2. Click the **Next** button to continue. The second wizard screen helps you set up your Prestige for Internet access.

*Wizard Setup - ISP Parameters for Internet Access*

**Service Name**

**Login Information**

Primary Phone #

Secondary Phone #

User Name

Password

**IP Address**

Obtain an IP Address Automatically

Static IP Address

IP Address

**Network Address Translation**

**Dial out Channel Setting**

Transfer Type

Multilink

**Connection**

Max Idle Timeout  Secs

In the **Service Name** field, enter your ISP's name. Enter the **Primary** and the **Secondary Phone** numbers to connect to the ISP. Next, enter the user name and password *exactly* as your ISP assigned them.

Select **Obtain an IP Address Automatically** if you have a dynamic IP address; otherwise select **Static IP Address** and type your ISP assigned IP address in the text box below.

Choose the type of Network Address Translation (NAT) you need. Select **Full Feature** if you have multiple public WAN IP addresses for your Prestige. Select **SUA Only** if you have just one public WAN IP address for your Prestige. Select **None** to disable NAT.

**When you select Full Feature you must configure at least one address mapping set. For more information about NAT and the choices listed refer to your *User's Guide*.**

In the **Transfer Type** drop-down list box, choose the type of connection between the router and this remote node. Select **64K**, or **Leased**. If you selected **64K**, select a PPP **Multilink** protocol.

In the **Max Idle Timeout** field, enter the amount of time (in seconds) after which you want the connection to timeout if the line remains consistently idle.

3. Click **Next** to finish configuring the Prestige or **Back** to return to the previous screen. Verify the settings in the screen shown next.

**Wizard Setup - ISP Parameters for Internet Access**

---

**ISDN Information:**  
B Channel Usage: **Switch/Switch**  
ISDN Data :  
Outside Line Prefix:

**WAN Information:**  
Service Name : **ChangeMe**  
Primary Phone #: **1234**  
Secondary Phone #:  
User Name : **ChangeMe**  
Password: **\*\*\*\*\***  
IP Address: **Obtain an IP Address Automatically**  
Network Address Translation: **SUA Only**  
Transfer Type: **64K**  
Multilink: **Off**  
Connect on Demand: **Max Idle Timeout 100 Secs.**

**LAN Information:**  
IP Address: **192.168.1.1**  
IP Mask: **255.255.255.0**  
DHCP: **ON**  
Client IP Pool Starting Address: **192.168.1.33**  
Size of Client IP Pool: **6**

---

4. To change the LAN information on the Prestige, click **Change LAN Configuration**. Otherwise click **Save Settings** to save the configuration and skip to step 5.

**Wizard Setup - ISP Parameters for Internet Access**

**TCP/IP**

LAN IP Address: 192.168.1.1

LAN Subnet Mask: 255.255.255.0

**DHCP**

DHCP Server: ON

Client IP Pool Starting Address: 192.168.1.33

Size of Client IP Pool: 6

Primary DNS Server: 0.0.0.0

Secondary DNS Server: 0.0.0.0

Back Finish

From the **DHCP Server** drop-down list box, select **On** to allow your Prestige to assign IP addresses, an IP default gateway and DNS servers to computer systems that support the DHCP client. Select **Off** to disable DHCP server.

When DHCP server is used, set the following items:

Specify the first of the contiguous addresses in the IP address pool in the **Client IP Pool Starting Address** field. Specify the size or count of the IP address pool in the **Size of Client IP Pool** field. Enter the IP address(es) of the DNS server(s) in the **Primary DNS Server** and/or **Secondary DNS Server** fields.

Enter the LAN IP address of your Prestige in dotted decimal notation in the **LAN IP Address** field. For example, 192.168.1.1 (factory default).

**If you change the Prestige's LAN IP address, you must use the new IP address if you want to access the web configurator again.**

Enter a subnet mask in dotted decimal notation in the **LAN Subnet Mask** field.

5. The Prestige automatically tests the connection to the computer(s) connected to the LAN ports. To test the WAN connection from the Prestige to the ISP, click **Start Diagnose**. Otherwise click **Return to Main Menu** to go back to the **Site Map** screen.

**Wizard Setup - ISP Parameters for Internet Access**

**LAN connections**

Test your Ethernet Connection **PASS**

**WAN connections**

Test ISDN loopback test **FAIL**

Start Diagnose Return to Main Menu

## 4.4 Test Your Internet Connection

Launch your web browser and navigate to [www.zyxel.com](http://www.zyxel.com). You don't need a dial-up program such as Dial Up Networking. Internet access is just the beginning. Refer to the *User's Guide* for more detailed information on the complete range of Prestige features.

# 5 Advanced Configuration

This section shows how to configure some of the advanced features of the Prestige.

## 5.1 Network Address Translation Overview

NAT (Network Address Translation - NAT, RFC 1631) is the translation of the IP address of a host in a packet. For example, the source address of an outgoing packet, used within one network is changed to a different IP address known within another network.

If you have a single public IP address then select **SUA Only** in the **NAT-Mode** screen (see *Figure 1*). If you have multiple public IP addresses then you may use full feature mapping types (see the *User's Guide* for more details).

NAT supports five types of IP/port mapping. They are:

1. **One-to-One:** One-to-one mode maps one local IP address to one global IP address. Note that port numbers do not change for One-to-one NAT mapping type.
2. **Many-to-One:** Many-to-One mode maps multiple local IP addresses to one global IP address.
3. **Many-to-Many Overload:** Many-to-Many Overload mode maps multiple local IP addresses to shared global IP addresses.
4. **Many-to-Many No Overload:** Many-to-Many No Overload mode maps each local IP address to unique global IP addresses.
5. **Server:** This type allows you to specify inside servers of different services behind the NAT to be accessible to the outside world.

## 5.2 Configuring SUA Server

An SUA server set is a list of inside (behind NAT on the LAN) servers, for example, web or FTP, that you can make visible to the outside world even though SUA makes your whole inside network appear as a single computer to the outside world.

1. From the main screen click **Advanced Setup** and then **NAT** to open the **NAT-Mode** screen. Select **SUA Only**.



**NAT - Mode**

---

Network Address Translation

None  
 **SUA Only** [Edit Details](#)  
 Full Feature [Edit Details](#)

---

**Figure 1 NAT: Mode**

2. Click **Edit Details**.

**NAT - Edit SUA/NAT Server Set**

	Start Port No.	End Port No.	IP Address
<b>1</b>	All ports	All ports	0.0.0.0
<b>2</b>	0	0	0.0.0.0
<b>3</b>	0	0	0.0.0.0
<b>4</b>	0	0	0.0.0.0
<b>5</b>	0	0	0.0.0.0
<b>6</b>	0	0	0.0.0.0
<b>7</b>	0	0	0.0.0.0
<b>8</b>	0	0	0.0.0.0
<b>9</b>	0	0	0.0.0.0
<b>10</b>	0	0	0.0.0.0
<b>11</b>	0	0	0.0.0.0
<b>12</b>	0	0	0.0.0.0

**Figure 2 SUA/NAT Server**

The following table describes the labels in this screen.

**Table 1 SUA/NAT Server**

LABEL	DESCRIPTION
Start Port No.	Type a port number in this field. To forward only one port, type the port number again in the <b>End Port</b> field. To forward a series of ports, type the start port number here and the end port number in the <b>End Port</b> field.
End Port No.	Type a port number in this field. To forward only one port, type the port number in the <b>Start Port</b> field above and then type it again in this field. To forward a series of ports, type the last port number in a series that begins with the port number in the <b>Start Port</b> field above.
IP Address	Enter the inside IP address of the server here.

### 5.3 Firewall Overview

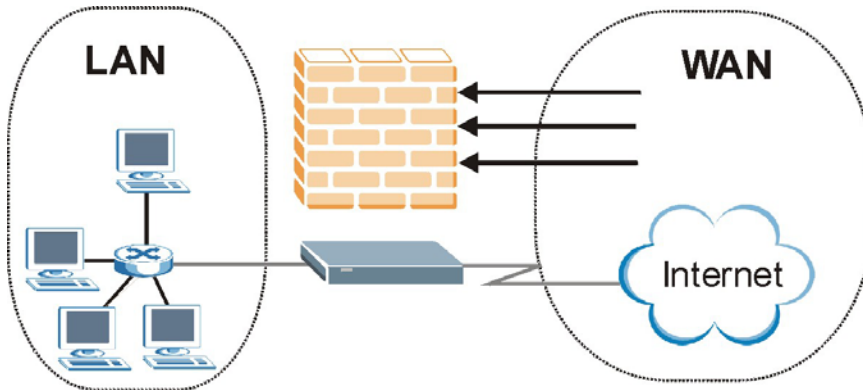
The Prestige firewall is a stateful inspection firewall and is designed to protect against Denial of Service attacks when activated. The Prestige’s purpose is to allow a private Local Area Network (LAN) to be securely connected to the Internet. The Prestige can be used to prevent theft, destruction and modification of data, as well as log events, which may be important to the security of your network. The Prestige also has packet-filtering capabilities.

When activated, the firewall allows all traffic to the Internet that originates from the LAN, and blocks all traffic to the LAN that originates from the Internet. In other words the Prestige will:

- Allow all sessions originating from the LAN to the WAN**
- Deny all sessions originating from the WAN to the LAN**

**LAN-to-WAN** rules are local network to Internet firewall rules. The default is to forward all traffic from your local network to the Internet.

The following figure illustrates a Prestige firewall application.



**Figure 3 Firewall Application**

## 5.4 Enabling the Firewall

From the main screen, click **Advanced Setup, Firewall** and then **Config** to open the **Configuration** screen. Enable (or activate) the firewall by selecting the **Enable Firewall** check box as seen in the following screen.

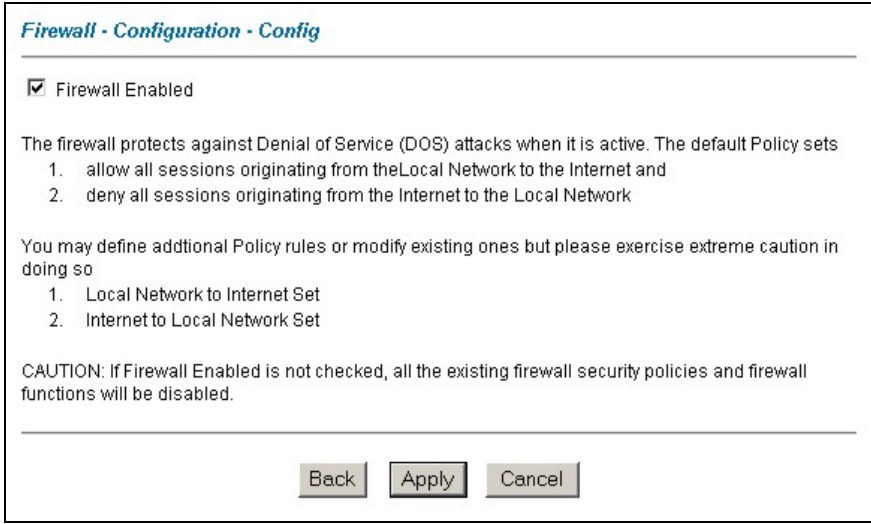


Figure 4 Enabling the Firewall

## 5.5 Procedure for Configuring Firewall Rules

From the main screen, click **Advanced Setup, Firewall** and then **Rule Summary** (for either local network to Internet rules or Internet to local network rules) to open the **Summary** screen.

**Firewall - LAN to WAN - Rule Summary**

---

The default action for packets not matching following rules:

Default Permit Log

No.	Source IP	Destination IP	Service	Action	Log
<a href="#">1</a>	<input type="text"/>	<input type="text"/>	<input type="text"/>		
<a href="#">2</a>	<input type="text"/>	<input type="text"/>	<input type="text"/>		
<a href="#">3</a>	<input type="text"/>	<input type="text"/>	<input type="text"/>		
<a href="#">4</a>	<input type="text"/>	<input type="text"/>	<input type="text"/>		
<a href="#">5</a>	<input type="text"/>	<input type="text"/>	<input type="text"/>		
<a href="#">6</a>	<input type="text"/>	<input type="text"/>	<input type="text"/>		
<a href="#">7</a>	<input type="text"/>	<input type="text"/>	<input type="text"/>		
<a href="#">8</a>	<input type="text"/>	<input type="text"/>	<input type="text"/>		
<a href="#">9</a>	<input type="text"/>	<input type="text"/>	<input type="text"/>		
<a href="#">10</a>	<input type="text"/>	<input type="text"/>	<input type="text"/>		

Rules Reorder: Move rule number  to rule number

---

**Figure 5 Rule Summary**

The following table describes the labels in this screen.

**Table 2 Rule Summary**

LABEL	DESCRIPTION
The default action for packets not matching following rules	Should packets that do not match the following rules be blocked or forwarded? Make your choice from the drop down list box. Note that “block” means the firewall silently discards the packet.
Default Permit Log	Click this check box to log all matched rules in the Access Control List (ACL) default set.
The following read-only fields summarize the rules you have created that apply to traffic traveling in the selected packet direction. The firewall rules that you configure (summarized below) take priority over the general firewall action settings above.	
No.	This is your firewall rule number. The ordering of your rules is important as rules are applied in turn. The <b>Move</b> field below allows you to reorder your rules.

**Table 2 Rule Summary**

LABEL	DESCRIPTION
Source IP	This drop-down list box displays the source addresses or ranges of addresses to which this firewall rule applies. Please note that a blank source or destination address is equivalent to <b>Any</b> .
Destination IP	This drop-down list box displays the destination addresses or ranges of addresses to which this firewall rule applies. Please note that a blank source or destination address is equivalent to <b>Any</b> .
Service	This drop-down list box displays the services to which this firewall rule applies. Please note that a blank service type is equivalent to <b>Any</b> .
Action	This is the specified action for that rule, either <b>Block</b> or <b>Forward</b> . Note that <b>Block</b> means the firewall silently discards the packet.
Log	This field shows you if a log is created for packets that match the rule ( <b>Match</b> ), don't match the rule ( <b>Not Match</b> ), both ( <b>Both</b> ) or no log is created ( <b>None</b> ).
Rules Reorder	You may reorder your rules using this function. Select the rule you want to move. The ordering of your rules is important as rules are applied in turn.
To Rule Number	Select the number you want to move the rule to.
Move	Click <b>Move</b> to move the rule.

Follow these directions to create a new rule.

1. In the **Summary** screen, click a rule's index number. The **Edit Rule** screen opens.
2. In the **Available Services** text box, select the services you want. Customize ports for services not predefined by the Prestige by clicking the **Edit Available Service** buttons. For a comprehensive list of port numbers and services, visit the IANA (Internet Assigned Number Authority) web site.
3. Configure the **Source Address** and **Destination Address** for the rule.

**Firewall - LAN to WAN - Edit Rule 1**

Source Address:

##### Source IP Address #####  
Any

SrcAdd   SrcEdit   SrcDelete

Destination Address:

##### Destination IP Address #####  
Any

DestAdd   DestEdit   DestDelete

Service:

Available Services:

AIM/NEW-ICQ(TCP:5190)

AUTH(TCP:113)

BGP(TCP:179)

BOOTP\_CLIENT(UDP:68)

BOOTP\_SERVER(UDP:67)

[Edit Available Service](#)

<< >>

Selected Services:

Any(UDP)

Any(TCP)

Action for Matched Packets:    Forward ▾

Log:    None ▾

Alert

---

Back   Apply   Cancel   Delete

**Figure 6 Creating/Editing A Firewall Rule**

The following table describes the labels in this screen.

**Table 3 Creating/Editing A Firewall Rule**

LABEL	DESCRIPTION
Source Address	Click <b>SrcAdd</b> to add a new address, <b>SrcEdit</b> to edit an existing one or <b>SrcDelete</b> to delete one. Please see the next section for more information on adding and editing source addresses.

**Table 3 Creating/Editing A Firewall Rule**

LABEL	DESCRIPTION
Destination Address	Click <b>DestAdd</b> to add a new address, <b>DestEdit</b> to edit an existing one or <b>DestDelete</b> to delete one. Please see the following section on adding and editing destination addresses.
Services	
Available/ Selected Services	Highlight a service from the <b>Available Services</b> box on the left, then click <b>&gt;&gt;</b> to add it to the <b>Selected Services</b> box on the right. To remove a service, highlight it in the <b>Selected Services</b> box on the right, then click <b>&lt;&lt;</b> .
Edit Available Service	Click this button to go to the list of available services.
Action for Matched Packets	Should packets that match this rule be blocked or forwarded? Make your choice from the drop down list box. Note that <b>Block</b> means the firewall silently discards the packet.
Log	This field determines if a log is created for packets that match the rule, don't match the rule, both or no log is created.
Alert	Check the <b>Alert</b> check box to determine that this rule generates an alert when the rule is matched.
Delete	Click <b>Delete</b> to remove this rule.

## 5.6 Configuring Source and Destination Addresses

To add a new source or destination address, click **SrcAdd** or **DestAdd** from the previous screen. To edit an existing source or destination address, select it from the box and click **SrcEdit** or **DestEdit** from the previous screen. Either action displays the following screen.

The screenshot shows a dialog box titled "Firewall - LAN to WAN - Rule IP Config". It contains the following fields and controls:

- Address Type:** A dropdown menu currently set to "Subnet Address".
- Start IP Address:** A text input field containing "0.0.0.0".
- End IP Address:** A text input field containing "0.0.0.0".
- Subnet Mask:** A text input field containing "0.0.0.0".
- At the bottom, there are two buttons: "Apply" and "Cancel".

**Figure 7 Adding/Editing Source and Destination Addresses**

The following table describes the labels in this screen.

**Table 4 Adding/Editing Source and Destination Addresses**

LABEL	DESCRIPTION
Address Type	Do you want your rule to apply to packets with a particular (single) IP address, a range of IP addresses (e.g., 192.168.1.10 to 192.169.1.50), a subnet or any IP address? Select an option from the drop down list box
Start IP Address	Enter the single IP address or the starting IP address in a range here.
End IP Address	Enter the ending IP address in a range here.
Subnet Mask	Enter the subnet mask here, if applicable.

## 6 Troubleshooting

PROBLEM	CORRECTIVE ACTION
None of the LEDs turn on when you turn on the Prestige.	<p>Make sure that you have the correct power adaptor connected to the Prestige and plugged in to an appropriate power source. Check all cable connections.</p> <p>If the LEDs still do not turn on, you may have a hardware problem. In this case, you should contact your local vendor.</p>
Cannot access the Prestige from the LAN.	<p>Check the cable connection between the Prestige and your computer or hub.</p> <p>Ping the Prestige from a LAN computer. Make sure your computer Ethernet adapter is installed and functioning properly.</p>
Cannot ping any computer on the LAN.	<p>If the LAN LEDs are all off, check the cable connections between the Prestige and your LAN computers.</p> <p>Verify that the IP address, subnet mask of the Prestige and the LAN computers are in the same subnet.</p>
Cannot access the Internet.	<p>Verify the Internet connection settings in the <b>WAN</b> screen.</p> <p>The user name and password are case sensitive. Make sure you entered the correct user name and password.</p>