

# *ZyXEL G-360*

*802.11g Wireless PCI Adapter*

## *Quick Start Guide*

Version 1.0

August 2004



## Important Note

### **Federal Communications Commission (FCC) Interference Statement**

The 802.11g Wireless LAN Adapter has been tested to the FCC exposure requirements (Specific Absorption Rate).

The equipment complies with FCC RF radiation exposure limits set forth for an uncontrolled environment, under 47 CFR 2.1093 paragraph (d) (2).

This Transmitter must not be co-located or operating in conjunction with any other antenna or transmitter.

Refer to the User's Guide for general FCC statements.

### **Procedure to View a Product's Certification(s)**

1. Go to [www.zyxel.com](http://www.zyxel.com)
2. Select your product from the drop-down list box on the ZyXEL home page to go to that product's page.
3. Select the certification you wish to view from this page.

## 1. Installation Requirements

Before installation, you must have a computer with the following:

- Pentium II 300MHz or above
- A minimum of 6 MB available hard disk space
- A minimum of 32 MB RAM
- A CD-ROM drive
- A 32-bit (v2.2) PCI slot
- Windows 98 SE/Me/2000/XP

- Windows 98 SE users may need the Windows 98 SE CD



**If you install the Funk Odyssey Client software on the computer, uninstall (remove) it.**

## 2. Hardware Installation

Follow the steps below to install the ZyXEL G-360 in your computer.

1. Save your work and close all applications.
2. Turn off the computer and peripheral device(s), such as the printer. Then disconnect the computer power cord from the power source.
3. Ground yourself by wearing an anti-static wrist strap or touching a metal object. Remove the computer cover and the ZyXEL G-360 from its packaging.
4. Insert the ZyXEL G-360 into an available PCI slot. Make sure the ZyXEL G-360's contacts are fully seated in the PCI slot.
5. Secure the ZyXEL G-360 to the computer with a bracket screw.
6. Attach the included antenna to the ZyXEL G-360. The antenna should be perpendicular to the ground.
7. Replace the computer cover and power on your computer.

## 3. Driver Installation

Follow the steps for the appropriate version of Windows to install the ZyXEL driver.

## Windows 98 SE

1. When Windows automatically detects the ZyXEL G-360, click **Next**.
2. Select **Search for the best driver for your device. (Recommended)**, and click **Next**.
3. Insert the Installation CD into your CD-ROM drive. Select **Specify a location** and click **Browse** to find the **Driver** folder in the CD. Click **Next**.
4. When prompted, insert the Windows 98 SE CD and click **OK**. Or specify the location of the Windows 98 SE installation files and click **OK**.
5. When **Add New Hardware Wizard** finds the driver file, click **Next**.
6. Click **Finish** and restart the computer when prompted.

## Windows Me

1. Windows automatically detects the ZyXEL G-360. Select **Specify the location of the driver (Advanced)**, then click **Next**.
2. Insert the Installation CD into your CD-ROM drive. Select **Search for the best drive for your device** then select only **Removable Media (Floppy, CD-ROM ...)** and click **Next**.
3. When the **Add New Hardware Wizard** finds the driver, click **Next**.
4. Click **Finish** and restart the computer when prompted.

## Windows 2000

1. When Windows automatically detects the ZyXEL G-360, click **Next**.

2. Insert the Installation CD into your CD-ROM drive. Select **Search for a suitable driver for my device (recommended)** and click **Next**.
3. Select **CD-ROM drive** and click **Next**.
4. When the **Found New Hardware Wizard** finds the driver, click **Next**.
5. If a **Digital Signature Not Found** window displays, click **Yes** to continue.
6. Click **Finish** to complete the driver installation.

## Windows XP

1. Windows automatically detects the ZyXEL G-360. Select **Install from a list or specific location (Advanced)**, then click **Next**.
2. Insert the Installation CD into your CD-ROM drive. Select **Search for the best drive in these locations** then select only **Search removable media. (Floppy, CD-ROM ...)** and click **Next**.
3. If a warning window displays, click **Continue Anyway**.
4. Click **Finish** to complete the driver installation.

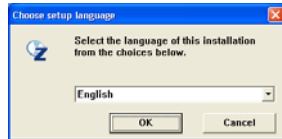
## 4. ZyXEL Wireless LAN Utility Installation

The installation procedures are similar for all supported Windows versions. Windows XP screen shots are shown unless otherwise specified.

1. After you have successfully installed the driver, re-insert the support CD into the CD-ROM drive on your computer. The CD automatically runs. Otherwise, locate and double-click **setup.exe**.

## ZyXEL G-360 Quick Start Guide

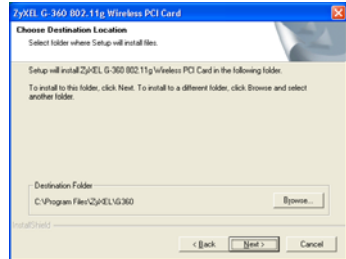
2. Select your language and click **OK**.



3. Click **Install Utility** to start installation.



4. A welcome screen displays. Click **Next**.
5. Click **Next** to accept the default file location or click **Browse** to select an alternate folder.



6. Click **Finish** to restart the computer.

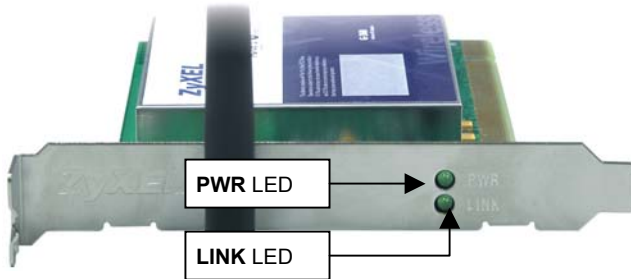
After you insert the ZyXEL G-360 and install the driver and ZyXEL Utility, an icon appears in the system tray.





If the ZyXEL Utility icon displays, the ZyXEL G-360 is installed properly. Refer to the *User's Guide* to configure the ZyXEL G-360.

## LED Display



The following table describes the LEDs on the ZyXEL G-360.

LED	COLOR	STATUS	DESCRIPTION
PWR	Green	On	The ZyXEL G-360 is receiving power.
		Off	The ZyXEL G-360 is not receiving power.
LINK	Green	Blinking	The ZyXEL G-360 is receiving or sending data.
		Off	The ZyXEL G-360 is not receiving or sending data.

## Troubleshooting

PROBLEM	CORRECTIVE ACTION
Windows does not auto-detect the ZyXEL G-360.	Make sure the ZyXEL G-360 is inserted into the computer PCI slot properly and then restart your computer. Check the LEDs on the ZyXEL G-360.
	Perform a hardware scan by clicking <b>Start, Settings, Control Panel</b> and double-clicking <b>Add/Remove Hardware</b> . (Steps may vary depending on the version of Windows). Follow the on-screen instructions to search for the ZyXEL G-360 and install the driver.
	Check for possible hardware conflicts. In Windows, click <b>Start, Settings, Control Panel, System, Hardware</b> and then click <b>Device Manager</b> . Verify the status of the ZyXEL G-360 under <b>Network Adapter</b> . (Steps may vary depending on the version of Windows).
	Install the ZyXEL G-360 in another computer. If the error persists, you may have a hardware problem. In this case, you should contact your local vendor.