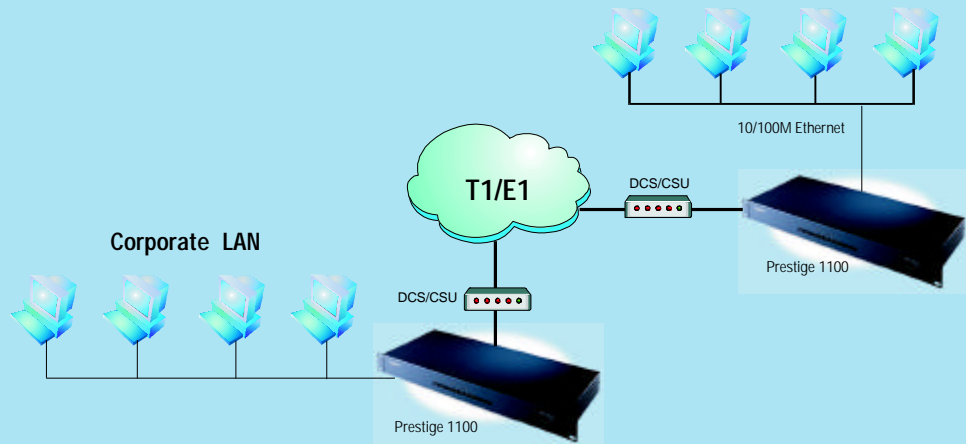


# Prestige 1100

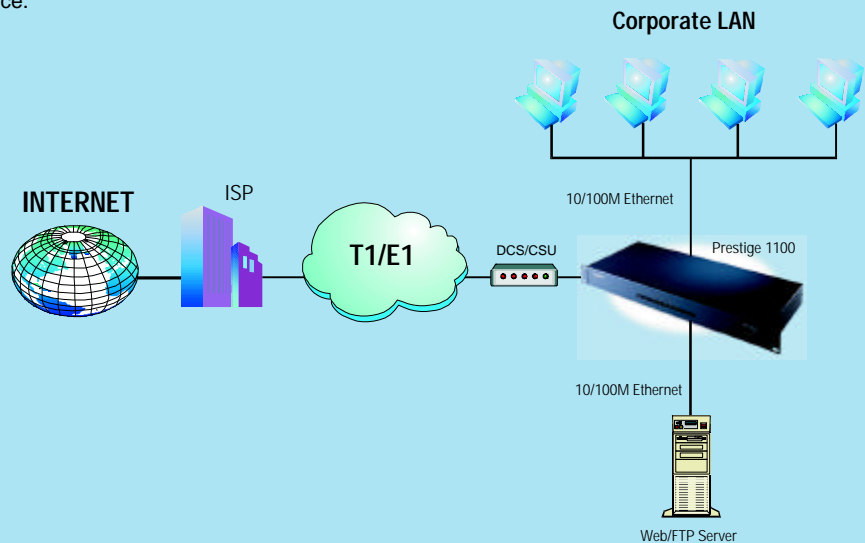
## LAN to LAN Connection

Prestige 1100 supports high speed connection between the corporate via leased T1/E1 lines.



## High Speed Internet Access

Prestige 1100 supports up to T1/E1 speed for high throughput Internet Access. Two Ethernet ports ensures secure Intranet and provides demilitarized Zone(DMZ) for public data service.



ISO 9001 Certified.



*This product is based on the ZyNOS Networking Operating System with free firmware upgrades that can be downloaded as they become available.*

*Specifications are subject to change without notice.*

*All trademarks are the property of their respective owners.*

# ZyXEL

TOTAL INTERNET ACCESS SOLUTION

**International:**  
ZyXEL Communications Corp.  
Tel: 886-3-5783942  
Fax: 886-3-5782439  
E-mail: sales@zyxel.com.tw  
support@zyxel.com.tw  
Web: <http://www.zyxel.com>

**North America:**  
ZyXEL Communications, Inc.  
Tel: 714-632-0882  
Fax: 714-632-0858  
E-mail: sales@zyxel.com  
support@zyxel.com  
Web: <http://www.zyxel.com>

**Scandinavia:**  
ZyXEL Communications A/S  
Tel: 45-3955-0700  
Fax: 45-3955-0707  
E-mail: sales@zyxel.dk  
support@zyxel.dk  
Web: <http://www.zyxel.dk>

**Germany:**  
ZyXEL Deutschland GmbH.  
Tel: +49-2405-6909-0  
Fax: +49-2405-6909-99  
E-mail: sales@zyxel.de  
support@zyxel.de  
Web: <http://www.zyxel.de>

**Austria:**  
ZyXEL Communications Services GmbH.  
Tel: +43-1-4948677-0  
Fax: +43-1-4948678  
E-mail: sales@zyxel.at  
support@zyxel.at  
Web: <http://www.zyxel.at>

# Prestige 1100

## WAN Router



Designed specifically for small/medium businesses, ZyXEL's Prestige 1100 is equipped with one WAN port and two LAN ports easily facilitating high-speed Internet access, web hosting and LAN-to-LAN connections.

The synchronous WAN design supports a digital leased line (Fractional T1/E1) connection via DSU/CSU with speeds of up to 2Mbps.

Two separate 10/100Mbps Ethernet ports enable corporate to build an efficient LAN in a secure environment.

Coupled with ZyNOS, ZyXEL's feature-rich, standard-based networking software, the Prestige 1100 is indeed an ideal solution for small and medium businesses.

## Features and Specifications

### WAN Network Connectivity

- A FlexWAN port with a 68-pin D-type connector.
  - RS-449/V.35/X.21/EIA 530/RS-232 interface support
  - Synchronous leased line mode
  - Interface speed up to 2 Mbps

### Internet Access

- Point-to-Point Protocol (PPP)
- Single User Account (SUA)/Network Address Translation (NAT) enables multiple workstations on the LAN to access the Internet for the cost of a single ISP account
- The most comprehensive NAT support for multimedia applications, including NetMeeting, CuSeeMe, ICQ, etc

### Network Protocols

- IP and IPX multi-protocol routing
- Transparent bridging
- IP, RIP-1 and RIP-2 support
- IP multicast
- IP policy routing

### Network Management and Control

- FTP firmware upgrade and configuration backup and restore
- Remote site dial-in management
- Menu-driven interface for advanced configuration
- Integrated SNMP support for remote network management
- Built-in diagnostic and remote support tools

### Robust Security Features

- Packet Filtering for controlled access to and from your LAN
- Password Protected System Management Terminal
- PAP (Password Authentication Protocol)
- CHAP (Challenge Handshake Authentication Protocol)
- Microsoft CHAP

### Physical Interfaces

- Two auto-sensing 10/100M Ethernet ports
- One 68-pin D-type port
- One RS-232 console port for local configuration and management
- Built-in power adaptor: 10V to 240V, 50 to 60 Hz Power Input

### Hardware Capabilities

- RISC CPU at 50 MHZ
- 8 MB flash ROM and Dual Flash Bank support
- 16 MB SDRAM

### Operation Environment

- Temperature: 0~50°C
- Humidity: 20%~95%

### Storage Environment

- Temperature: -30~60°C
- Humidity: 20%~95%

### Warranty

- 2 years