

NetAtlas Eeterprise

Support Notes

Version 1.00

September 2005



Table of Content

APPLICATION NOTES:	3
USING VLAN CONFIGURATION	3
USING VLAN TEMPLATE	6
USING PORTING MIRRORING	10
USING LINK AGGREGATION	11
UPGRADING FIRMWARE	13
STATUS	17
Hardware status	17
VLAN status.....	19
MAC/ARP Table status.....	19
WHERE TO SET UP THE IP ADDRESS	22

Application Notes:

Using VLAN Configuration

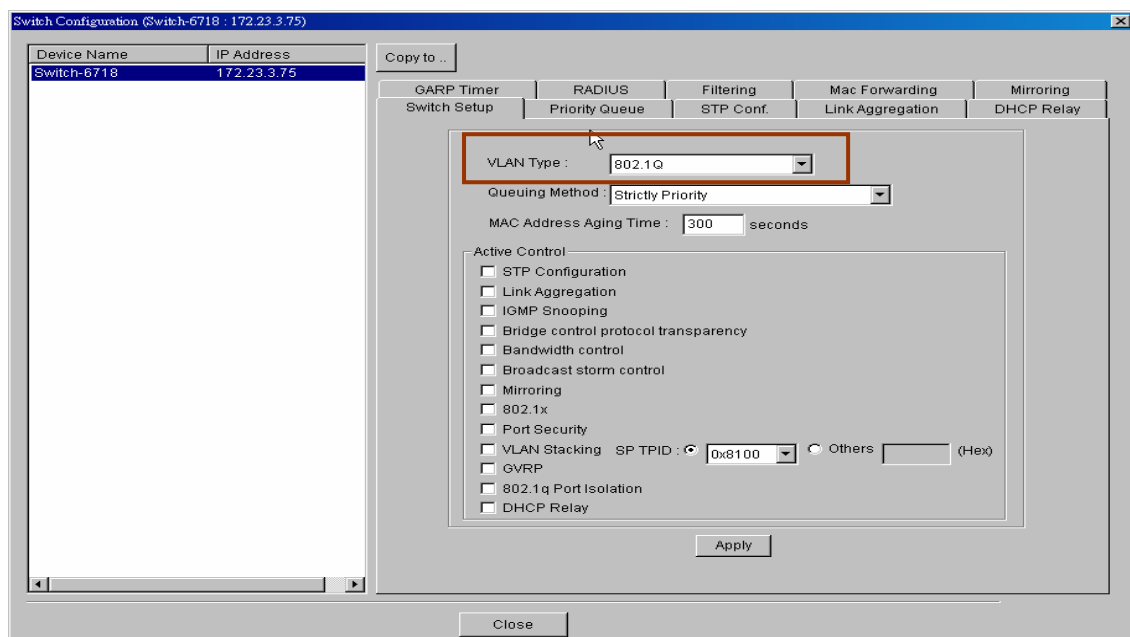
Scenario: How to configure VLAN 2 on port 2~10 fixed untagged

Follow steps to configure the VLAN setting.

Step 1: In the device panel list, right-click **Configuration, Switch Configuration** and then **Switch Setup** tab.

Step 2: Define the VLAN type, there are two types of VLAN, one is **802.1Q** and the other is **Port-based VLAN**. Select **802.1Q** as the VLAN type and click Apply in the Figure 1.

Figure 1 Selecting a VLAN Type



After the VLAN type selection, a pop-up window indicates that you have finished the configuration. Then after we have defined the VLAN type to be the 802.1Q, go back to click the Configuration and then VLAN configuration in Figure 2.

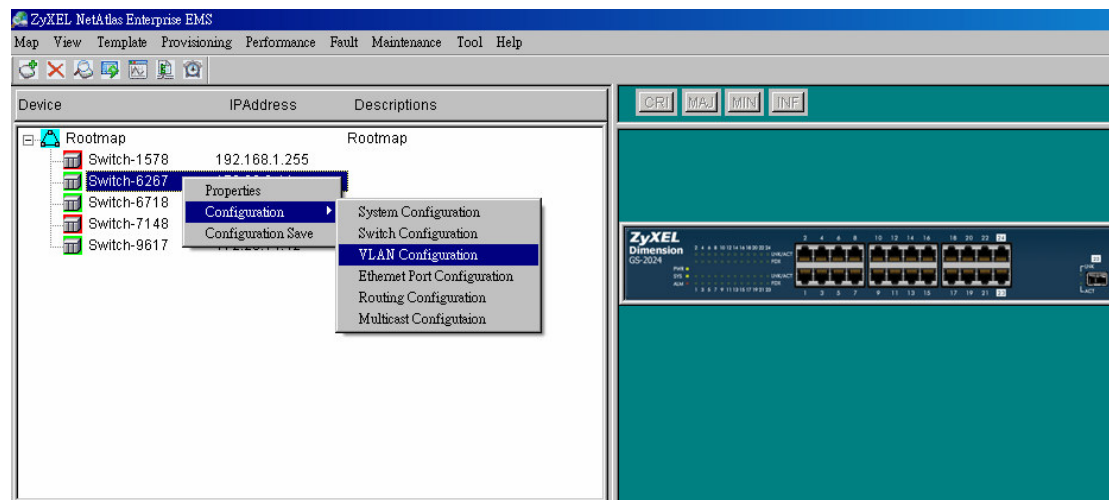
In the following table that describes the labels in the screen.

Table 1 VLAN Description

LABEL	DESCRIPTION
VLAN ID	This field displays the ID of the VLAN.
Name	This field displays the name of the VLAN.
Elapsed Time	This field displays the time elapsed since the VLAN was created.
Status	This field displays ACTIVE if the VLAN is active and will remain so after the next reset of the device. This field is DynamicGVRP if the VLAN is active and will remain so until removed by GVRP. This field is OTHER if the VLAN is active, but is not permanent or created by GVRP.

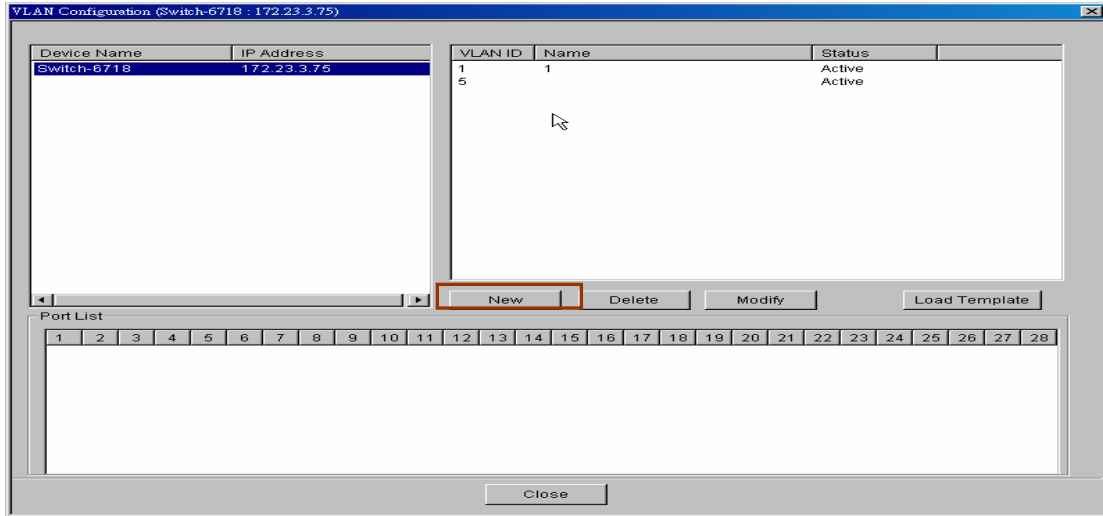
LABEL	DESCRIPTION
New	Click New to create a new VLAN. You must enter a VLAN ID and a VLAN Name to create a new VLAN. The new VLAN and name is displayed in the left-hand column in this screen.
Delete	Click on a VLAN in the left-hand column of this screen and then click the Delete button to remove it from the VLAN template.
Modify	Click on a VLAN in the left-hand column of this screen. Change the VLAN ID , VLAN Name or change the configuration of the egress, forbidden and untagged ports. Click the Modify button to save the changes.
Load Template	Use a VLAN template to overwrite existing selected VLANs. Select one or more VLANs and click the Load Template button. See Section 4.1 on page 56 for more information.
Port List	Click on a port in the Egress Ports list to add the selected port to the port list. If a port is not selected from any of the three port lists, then it is a normal tagged port. Refer to the following table for the VLAN port type descriptions.
Close	Click Close to close the screen.

Figure 2 VLAN Configuration



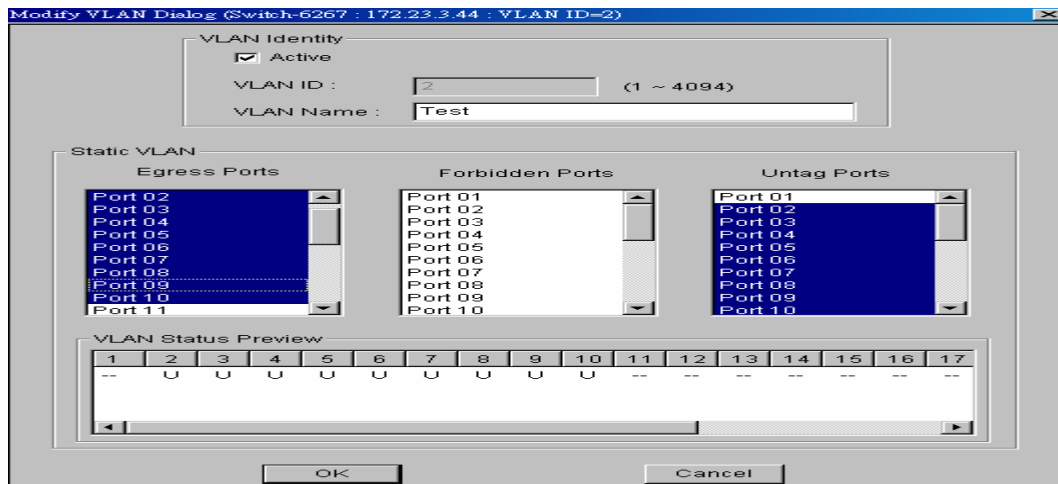
Click the New button to create a new VLAN ID in Figure 3.

Figure 3 Creating a new VLAN ID



1. Selecting Egress ports and defines them to be tagged or untagged in Figure 6.

Figure 4 Selecting the ports

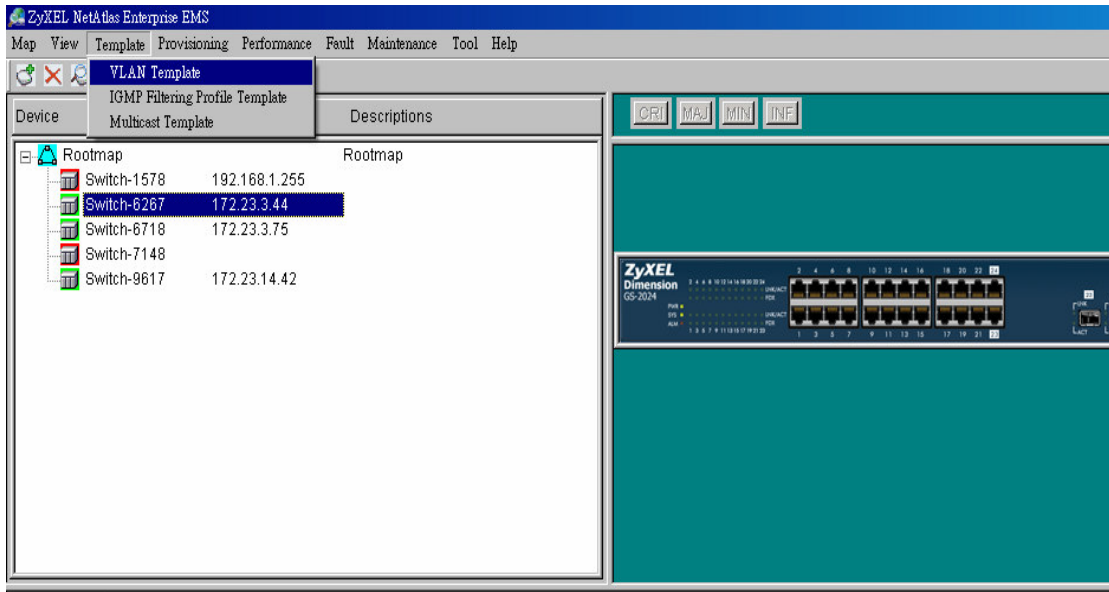


Using VLAN Template

Scenario: How to apply VLAN Template to other device?

Follow steps to configure the VLAN Template. Click Template and then click VLAN.

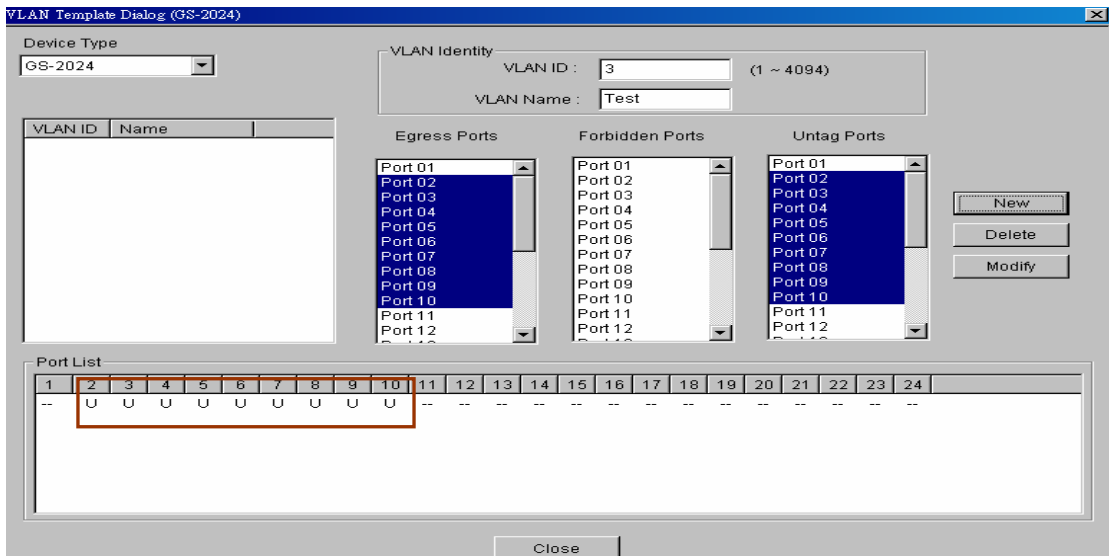
Figure 5 VLAN Template



1. Create a VLAN Template

Here, we create a VLAN Template: VLAN ID=3 on port 2~10 untagged in GS-2024. Select the ports 2~10 from the port panel list and defined them as untagged.

Figure 6 Creating a VLAN Template



Apply the VLAN Template to other devices. In the target device, in the VLAN

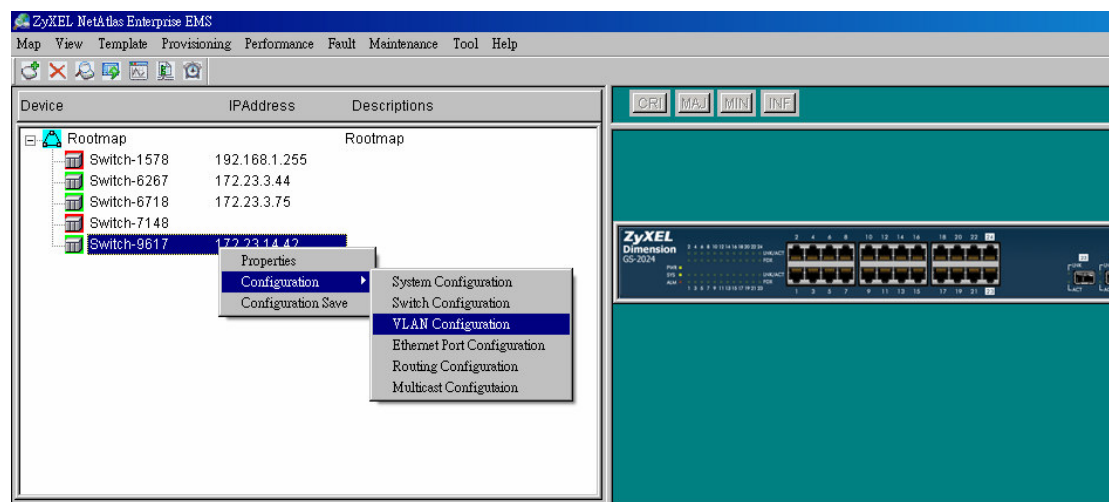
configuration, we need to load the VLAN template we created.
 The following table describes the labels in the screen.

Table 2: VLAN Template Description

LABEL	DESCRIPTION
Device Type	Select a device type from the drop-down list box to view the device's VLAN configuration.
VLAN Identity	
VLAN ID	Enter a unique number to identify the VLAN.
VLAN Name	Enter a descriptive name for identification purposes.
Egress Ports	A port that is in the egress list in a VLAN. Only select this if the subscriber's DSL modem or router supports 802.1Q VLAN. Select the ports which you want to be egress ports from the list provided.
Forbidden Ports	A port that is blocked from joining a VLAN group. No frames are transmitted through this port. A forbidden port cannot be an egress or untagged port. Select the ports which you want to be forbidden ports from the list provided.
Untag	A port that does not tag all outgoing frames transmitted. An egress port can be untagged. Select the ports which you want to be untagged ports from the list provided.
New	Click New to create a new VLAN. You must enter a VLAN ID and a VLAN Name to create a new VLAN. The new VLAN and name is displayed in the left-hand column in this screen.

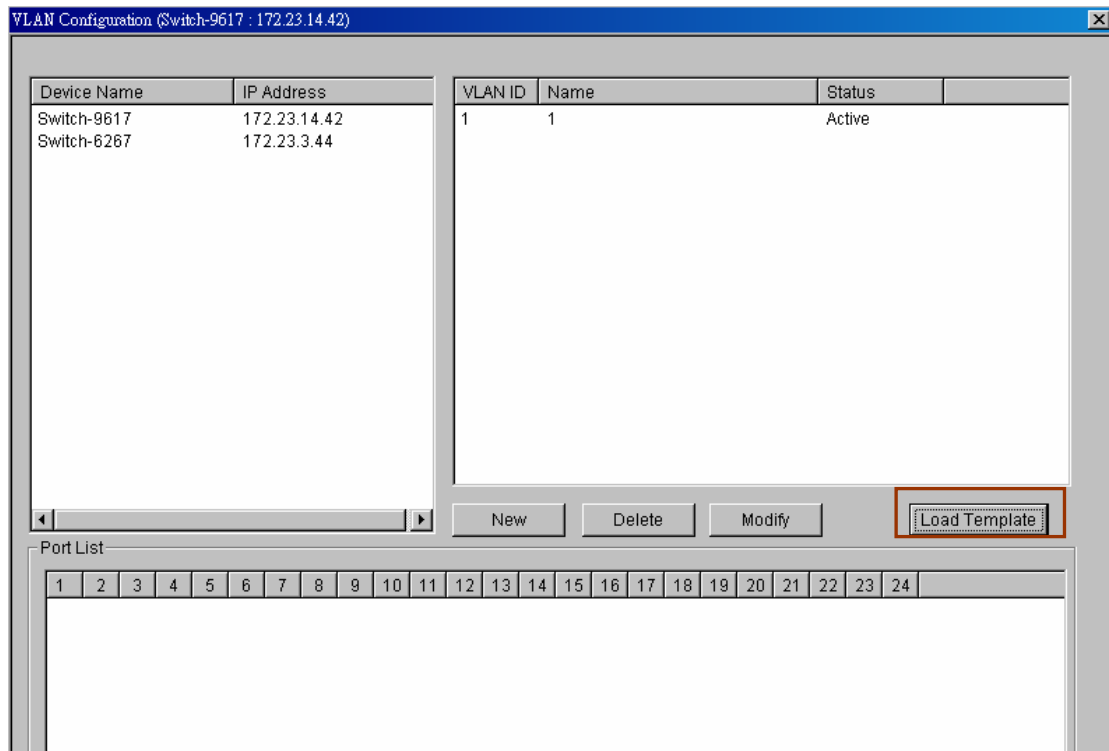
In the device list, click the configuration, and then select the VLAN Configuration to load the VLAN Template.

Figure 7 VLAN Configuration



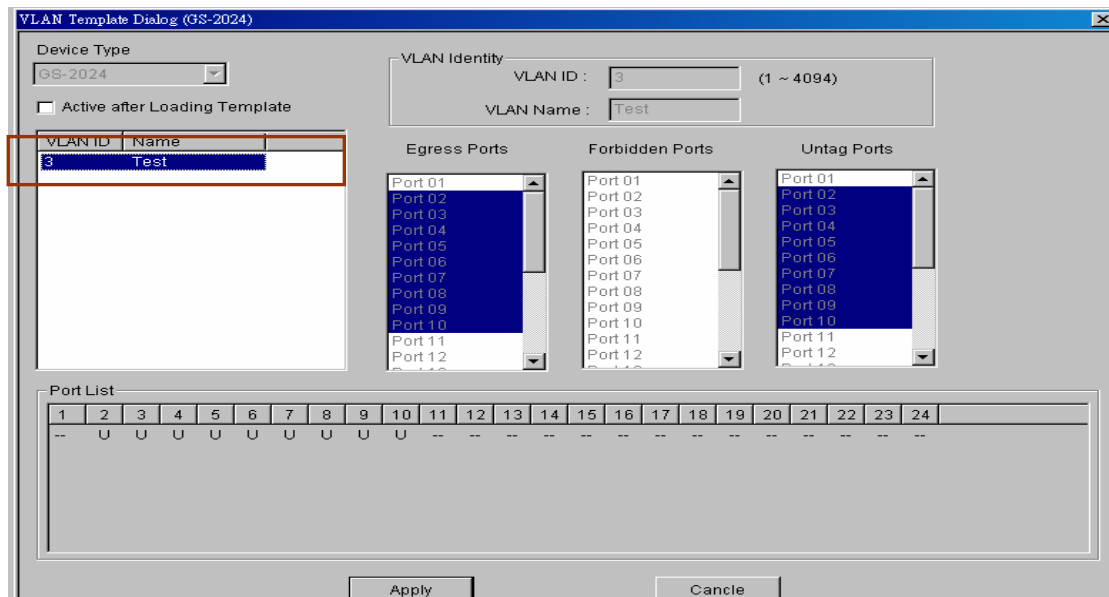
After that, we select **Load Template**

Figure 8 Load Template



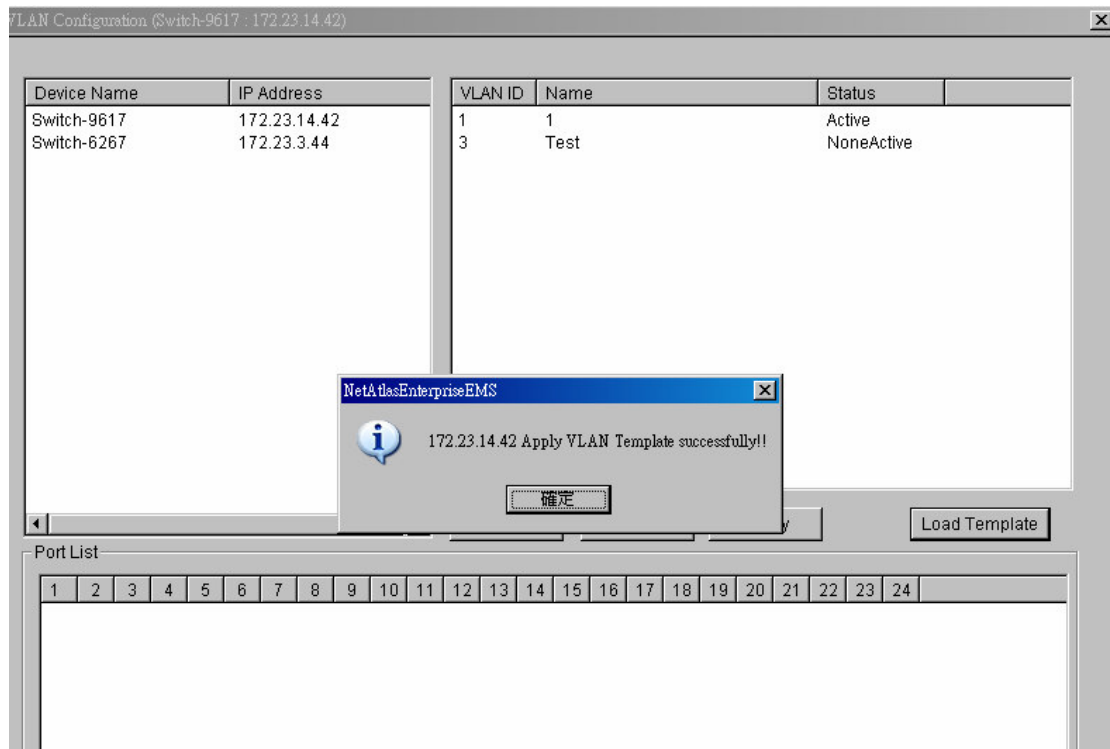
Here, we can see the template on the left side of the list, select the desired template and click Apply.

Figure 9 Selecting the Template



We will see the GS-2024 has another new VLAN ID in the VLAN configuration.

Figure 10 Loading Template



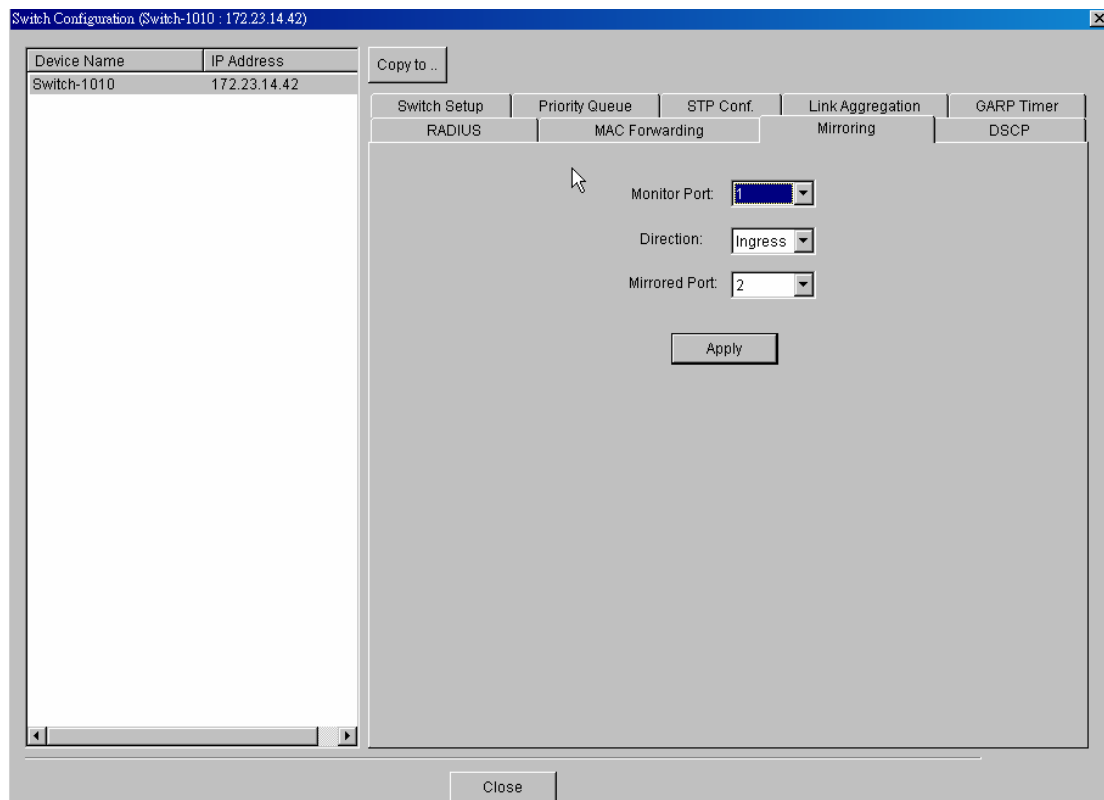
Using Porting Mirroring

Scenario: How to use port 1 to mirror the incoming traffic in port 2.

Step 1: In the device panel list, right-click **Configuration, Switch Configuration** and then **Switch Setup** tab.

Step 2: Select the **Mirroring** check box, select the ports from the port list, choose the direction of the packets, and then click **Apply** in the Figure 11.

Figure 11 Mirroring



Using Link Aggregation

Scenario: How to aggregate port 2, 3, 4, 5, 6 as a logical port.

Step 1: In the Device Panel list, select the device, right-click **Switch Configuration** and select the **Link Aggregation**. Enable the Group ID in Figure 12.

Step 2: In the Device Panel list, select the device, right-click **Configuration**, **Ethernet Port Configuration** and **Port Link Aggregation** in Figure 13.

Step 3: Select the ports to be aggregated from the port panel list, select the group and then click the **Apply**.

Figure 12 LACP

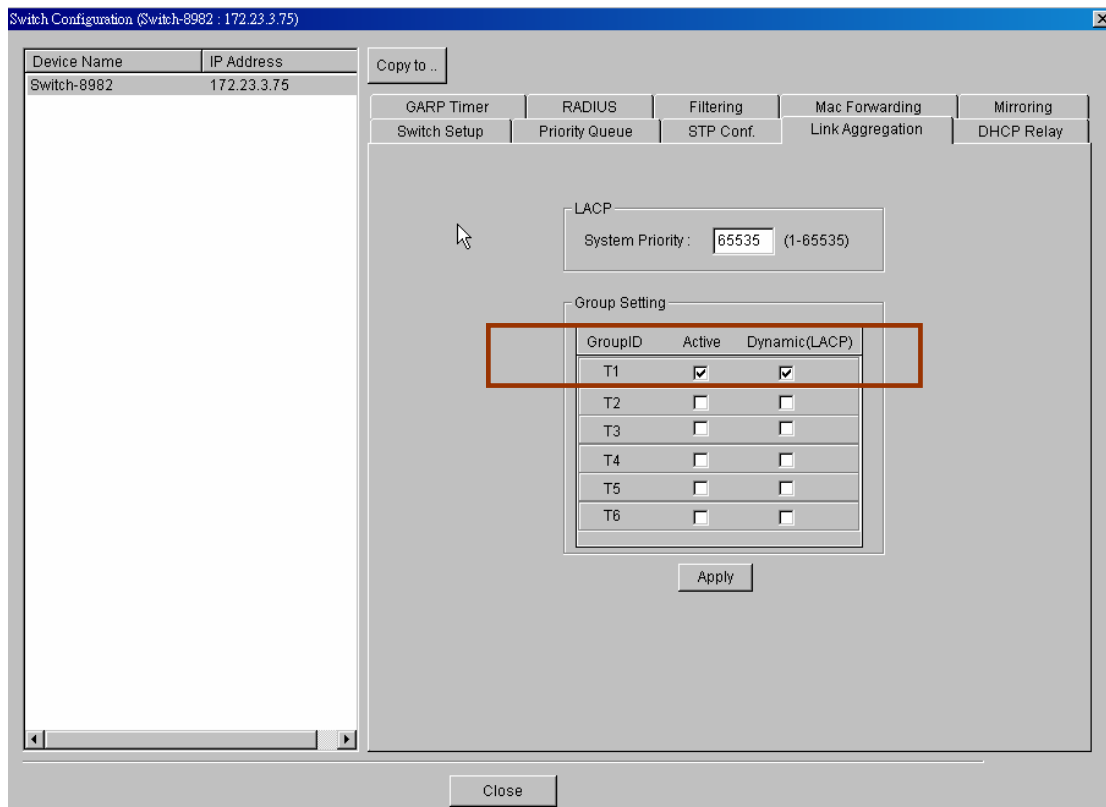
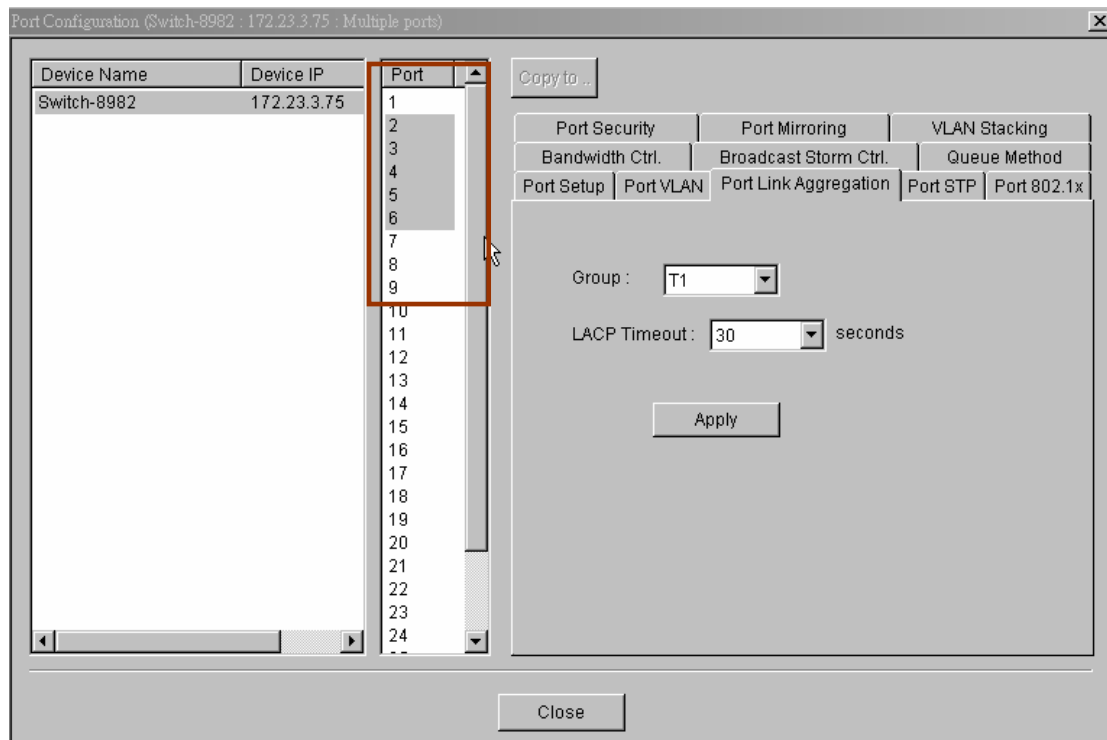


Figure 13: Port configuration



Upgrading firmware

Scenario: How to upgrade firmware

Alternative one: Click the Web Access where you can login the device the change the firmware.

Figure 13 Web Access

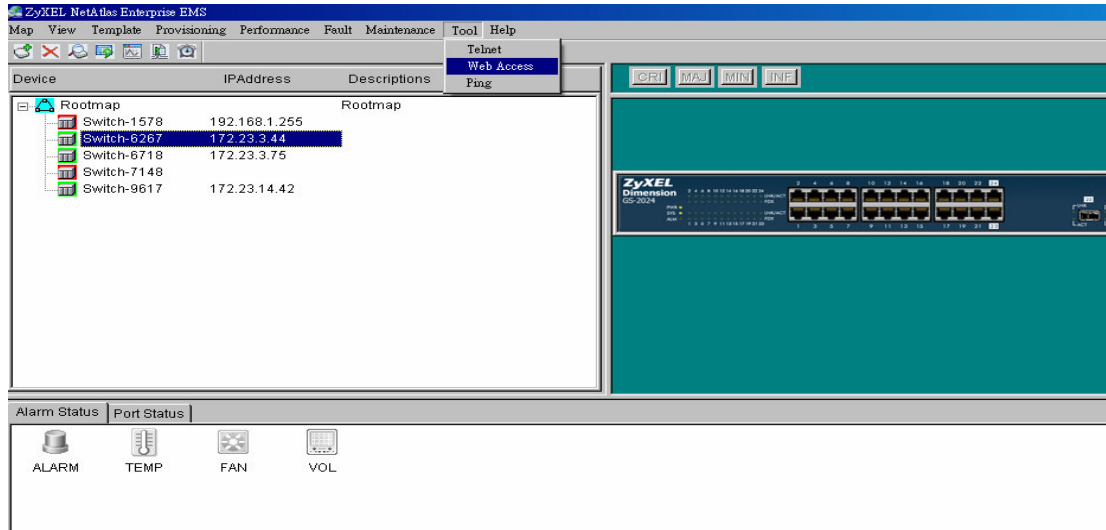
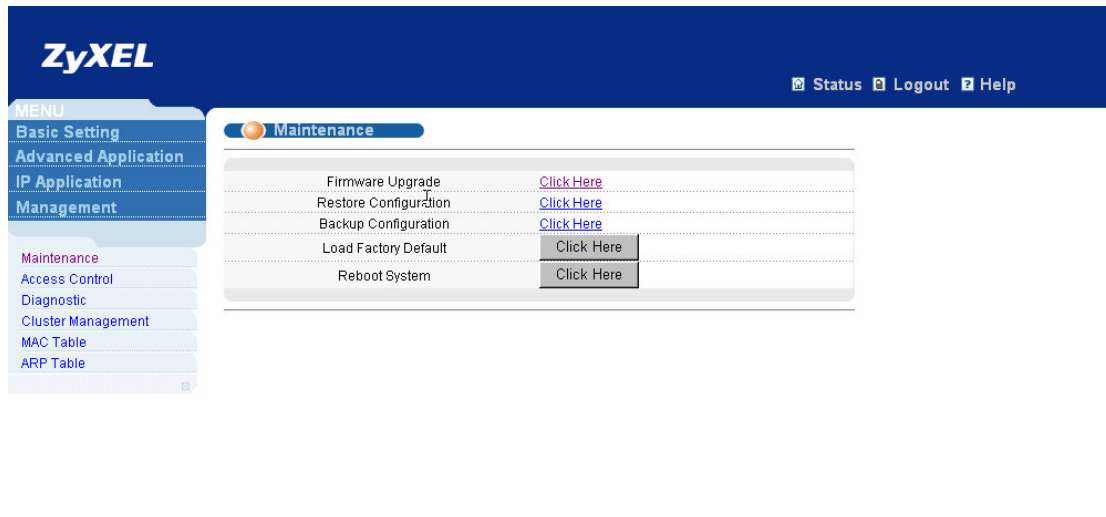


Figure 14 Firmware Upgrade



Alternative 2: In the Maintenance, select the Firmware Upgrade. Before upgrading the firmware, user needs to define the password.

Figure 15 Password Setup

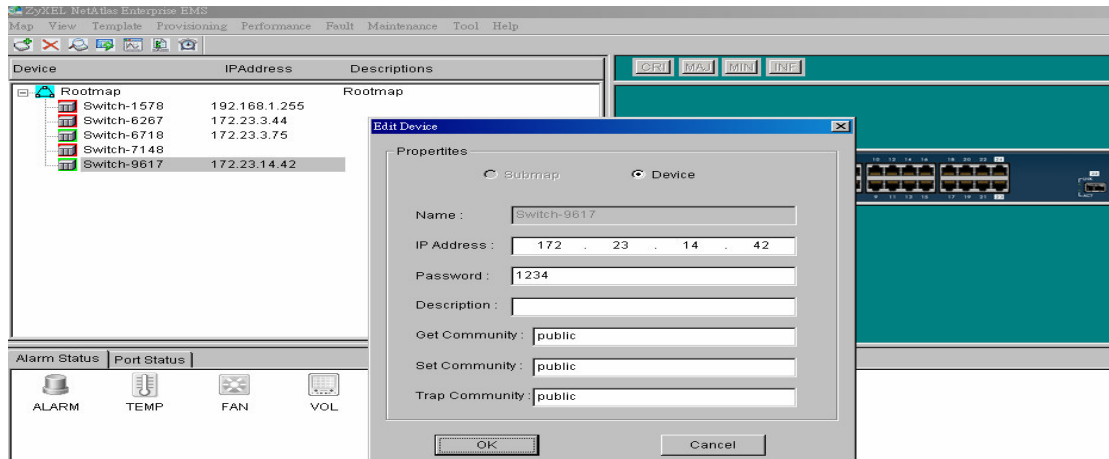


Figure 16 Firmware Upgrade

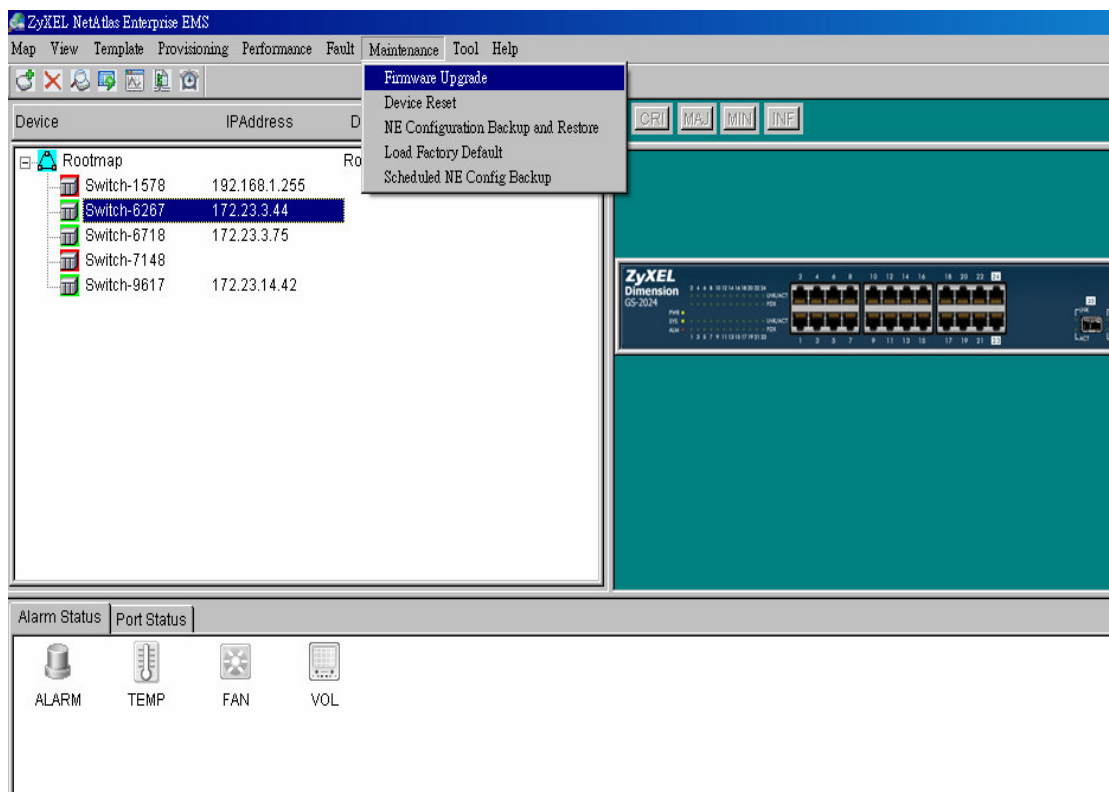


Figure 17 Selecting Device

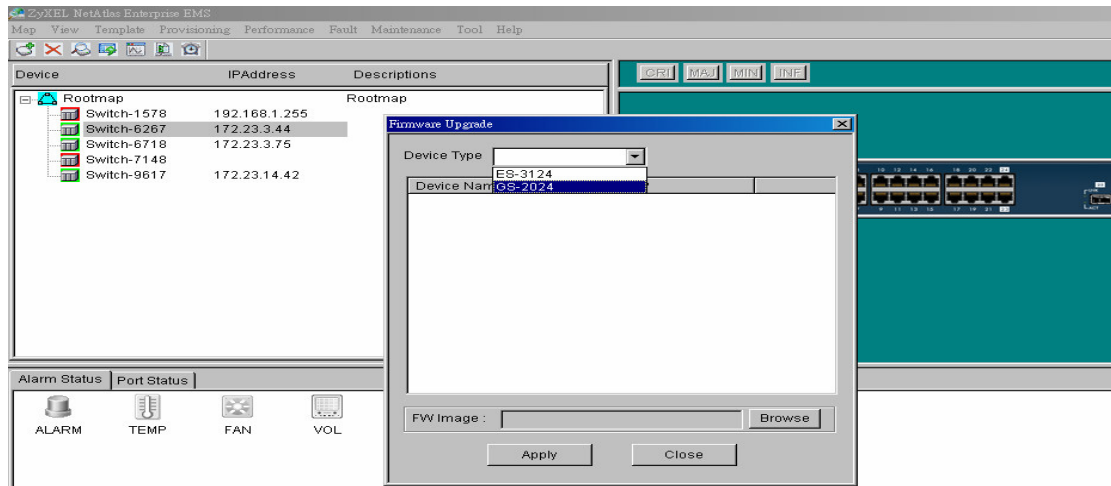


Figure 18 Selecting Firmware File

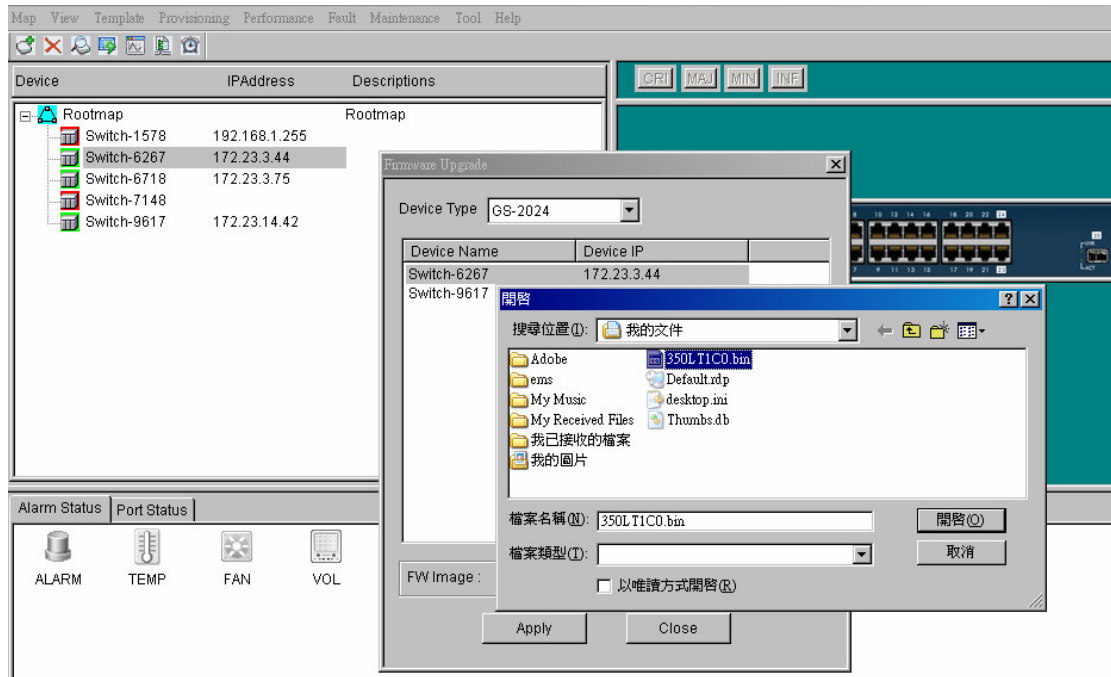
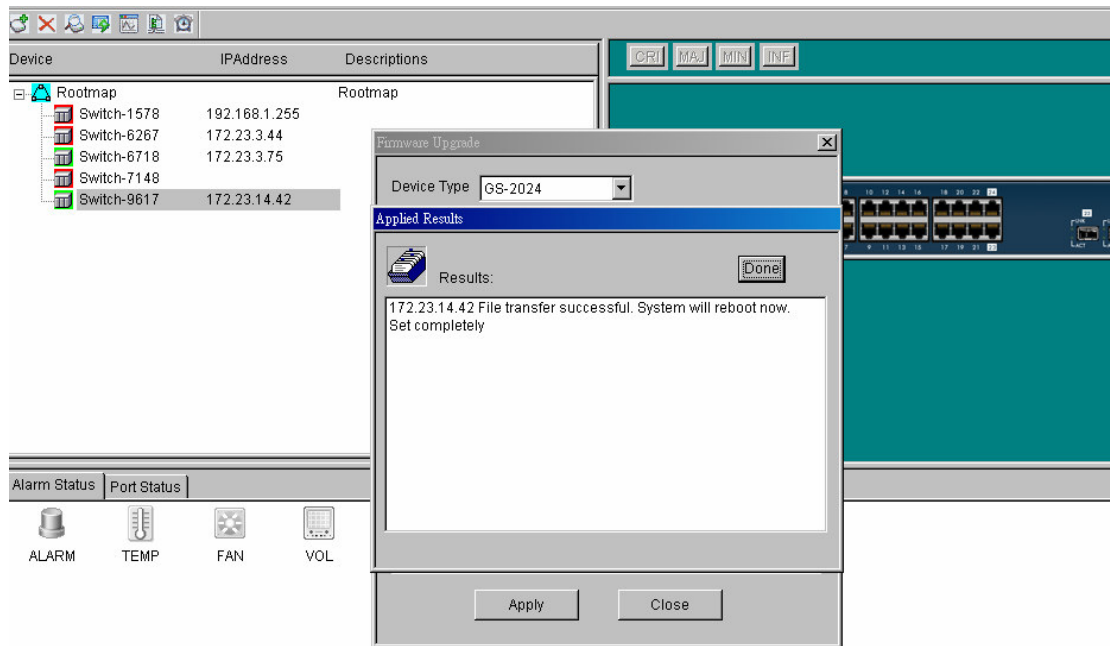


Figure 19 Applied Results



Status

Hardware status

Step: In the **view** option, select **hardware status**. Click the switch you want to view the hardware status. In the following example, we select ES-3124 as our target where we can see the status of Fan, Voltage and Temperature.

Figure 20 Hardware Status

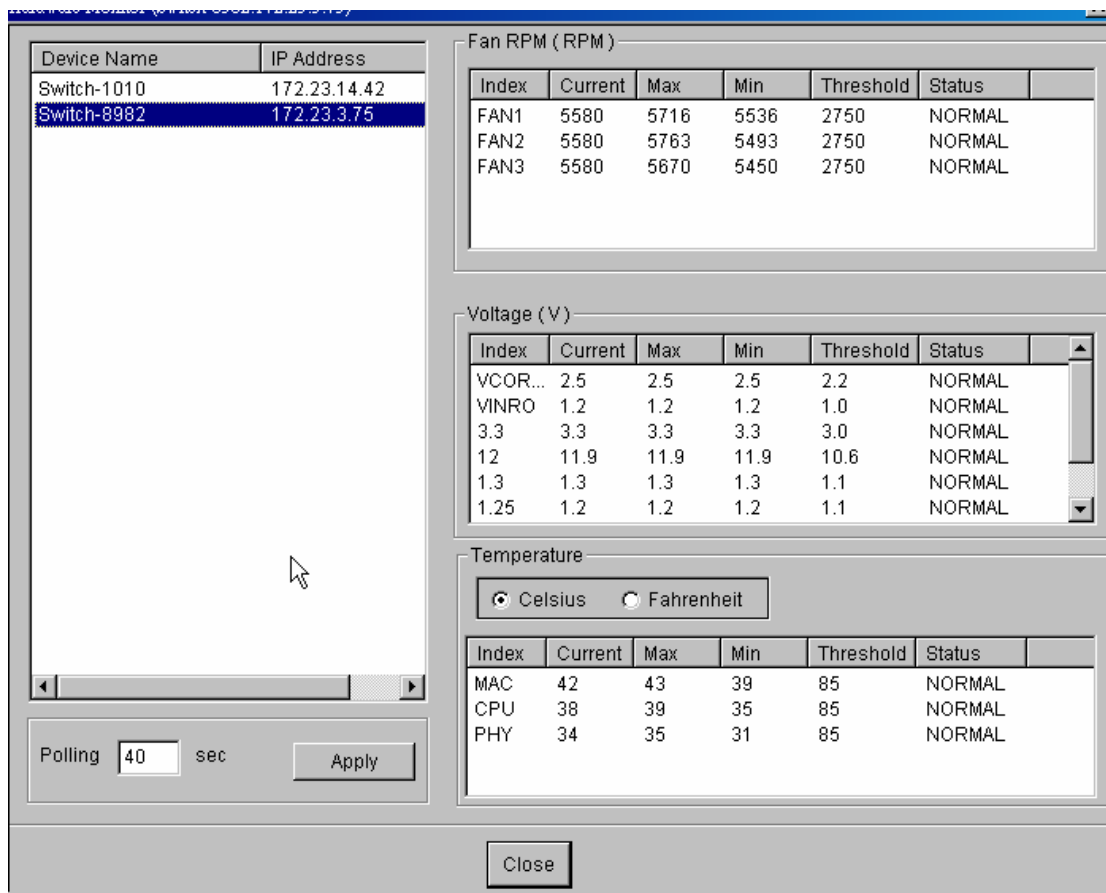


Table 3 Status: Hardware Status

LABEL	DESCRIPTION
Fan RPM	A properly functioning fan is an essential component (along with a sufficiently ventilated, cool operating environment) in order for the device to stay within the temperature threshold. Each fan has a sensor that is capable of detecting and reporting if the fan speed falls below the threshold shown.
Index	This field displays the fan number.
Current	This field displays this fan's current speed in Revolutions Per Minute (RPM).
Max	This field displays this fan's maximum speed recorded in Revolutions Per Minute (RPM).
Min	This field displays this fan's minimum speed recorded in Revolutions Per Minute (RPM). "<41" is displayed for speeds too small to measure (under 2000 RPM).
Threshold	This field displays the minimum speed at which a normal fan should work.
Status	NORMAL indicates that this fan is functioning above the minimum speed. ERROR indicates that this fan is functioning below the minimum speed.
Voltage (V)	The power supply for each voltage has a sensor that is capable of detecting and reporting if the voltage falls out of the tolerance range.
Index	This field displays the first voltage sensor number.
Current	This is the current voltage reading in volts.
Max	This field displays the maximum voltage recorded at this sensor in volts.

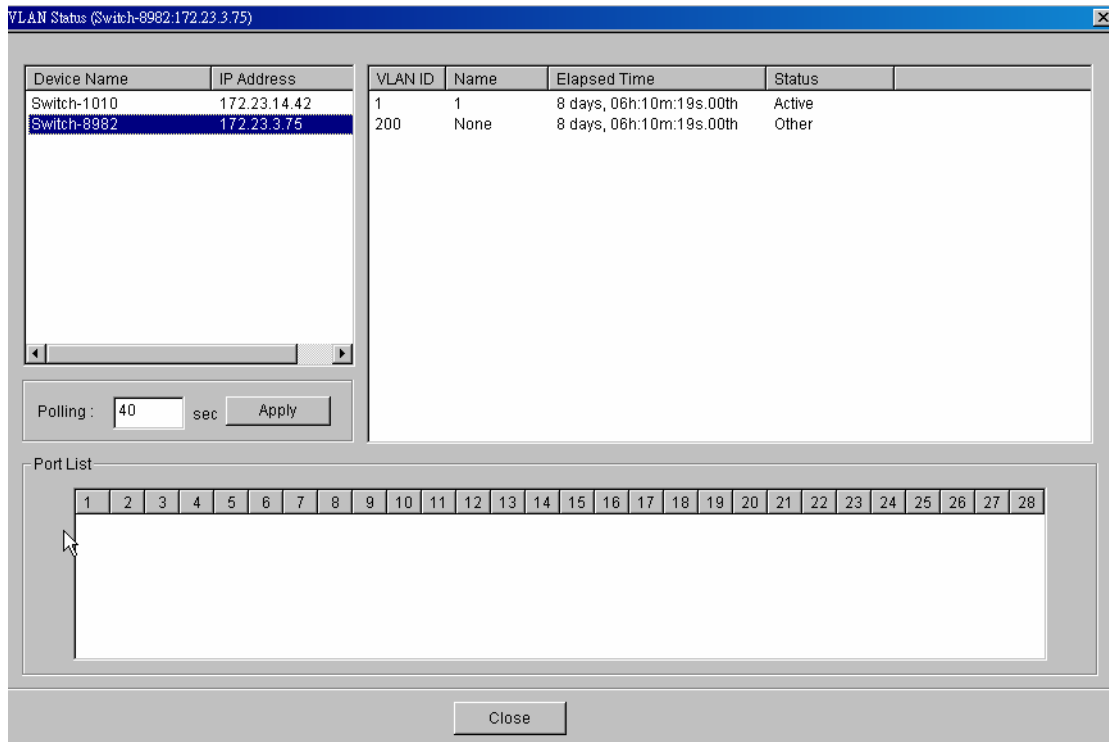
Table 4 Status: Hardware Status (Continued)

LABEL	DESCRIPTION
Min	This field displays the minimum voltage recorded at this sensor in volts.
Threshold	This field displays the minimum voltage percentage at which the switch should work.
Status	NORMAL indicates that the voltage is within an acceptable operating range at this point; otherwise ERROR is displayed. ABSENT indicates that there is no power reading at a sensor(s).
Temperature	The switch has temperature sensors that are capable of detecting and reporting if the temperature rises above the threshold. You may choose the temperature unit (Centigrade or Fahrenheit).
Celsius	Select this option to display the temperature in degrees Centigrade.
Fahrenheit	Select this option to display the temperature in degrees Fahrenheit.
Index	This field displays the temperature sensor number.
Current Value	This shows the current temperature at this sensor.
Max	This field displays the maximum temperature recorded at this sensor.
Min	This field displays the minimum temperature recorded at this sensor.
Threshold	This field displays the upper temperature limit at this sensor.
Status	This field displays NORMAL for temperatures below the threshold and ERROR for those above.
Polling	The text box displays how often (in seconds) this screen refreshes. You may change the refresh interval by typing a new number in the text box and then clicking Apply button.
Close	Click Close to close the screen.

VLAN status

Step: In the **view** option, select **VLAN status**. Click the switch you want to view the VLAN status. In the following example, we select ES-3124 as our target where we can see the status of VLAN as listed in the below figure.

Figure 21 VLAN Status



MAC/ARP Table status

Step: In the **view** option, select **802.1d**. Click the switch you want to view the MAC/ARP table status. In the following example, we select ES-3124 as our target where we can see the status of MAC/ARP table as listed in the below figure.

Figure 22 MAC Table Status

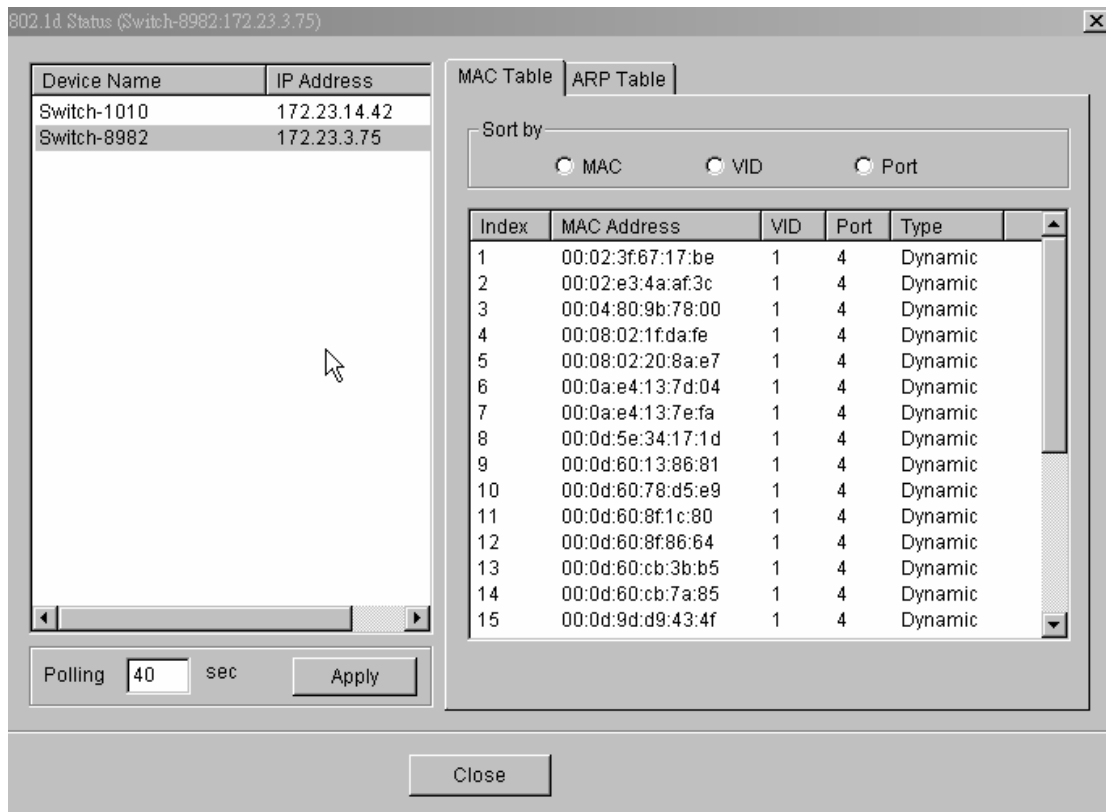


Table 5 Status: MAC table status


LABEL	DESCRIPTION
Sort by	Click one of the following buttons to display and arrange the data according to that button type. The information is then displayed in the summary table below.
MAC	Click this button to display and arrange the data according to MAC address.
VID	Click this button to display and arrange the data according to VLAN group.
Port	Click this button to display and arrange the data according to port number.
Index	This is the incoming frame index number.
Name	This field displays a descriptive name for this static MAC address forwarding rule.
MAC Address	This is the MAC address of the device from which this incoming frame came.
VID	This is the VLAN group to which this frame belongs.
Port	This is the port from which the above MAC address was learned.
 Type	This shows whether the MAC address is dynamic (learned by the switch) or static (manually entered in Static MAC Forwarding).
Polling	The text box displays how often (in seconds) this screen refreshes. You may change the refresh interval by typing a new number in the text box and then clicking the Apply button.
Close	Click Close to close the screen.

Figure 21 ARP Table Status

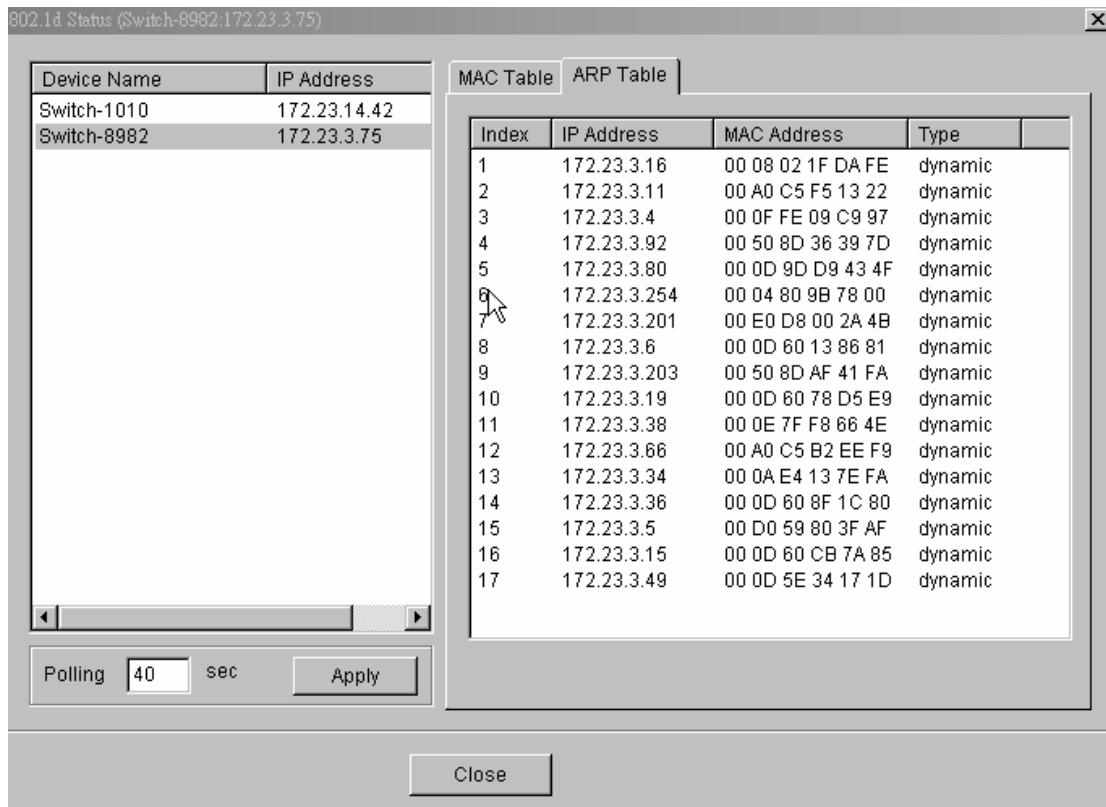


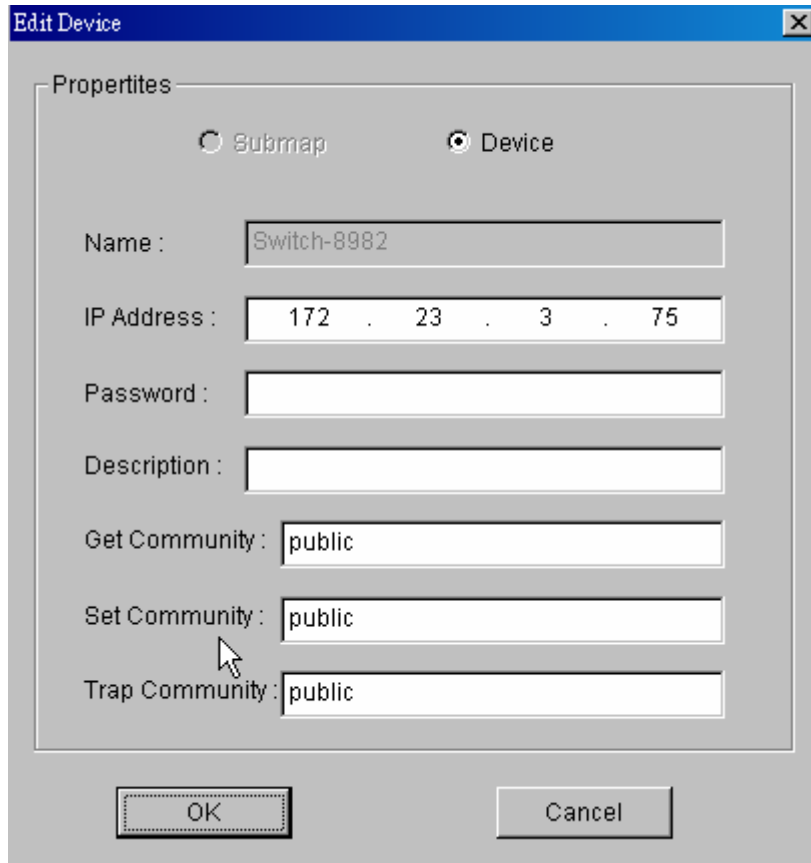
Table 6: Status: ARP Table Status

LABEL	DESCRIPTION
Index	This is the ARP table entry number.
IP Address	This is the learned IP address of a device connected to a switch port with corresponding MAC address below.
MAC Address	This is the MAC address of the device with corresponding IP address above.
Type	This shows whether the MAC address is dynamic (learned by the switch) or static (manually entered in Static MAC Forwarding).
Polling	The text box displays how often (in seconds) this screen refreshes. You may change the refresh interval by typing a new number in the text box and then clicking the Apply button.
Close	Click Close to close the screen.

Where to set up the IP address

Step: In the Device list, select **Property**. Click the switch you want to configure the IP address. In the following example, we select ES-3124 as our target where we can change device's IP address.

Figure 22 IP address



The screenshot shows a dialog box titled "Edit Device" with a close button (X) in the top right corner. The dialog is divided into a "Propertites" section and a bottom section with "OK" and "Cancel" buttons. In the "Propertites" section, there are two radio buttons: "Submap" (unselected) and "Device" (selected). Below the radio buttons are several text input fields: "Name" (containing "Switch-8982"), "IP Address" (containing "172 . 23 . 3 . 75"), "Password" (empty), "Description" (empty), "Get Community" (containing "public"), "Set Community" (containing "public"), and "Trap Community" (containing "public"). A mouse cursor is pointing at the "Set Community" field.