

ZyAIR B-100 11Mbps Wireless LAN PC Card *Quick Installation Guide* Version : 1.1

Installing the ZyAIR B-100



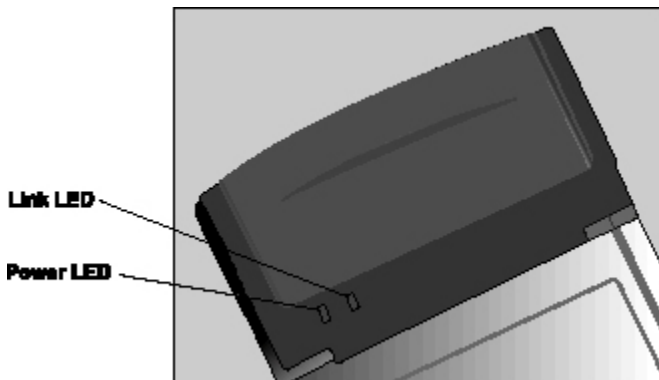
Package Contents

Please ensure that the following items are included in your package. If any items are missing contact your dealer.

- ZyAIR B-100 11Mbps Wireless LAN Card
- CD-ROM (includes device drivers, utility and user's manual)
- This quick installation guide

ZyAIR B-100 Quick Installation Guide

Status LEDs



LED	MEANING
POWER	Indicates that the B-100 is powered on (solid green).

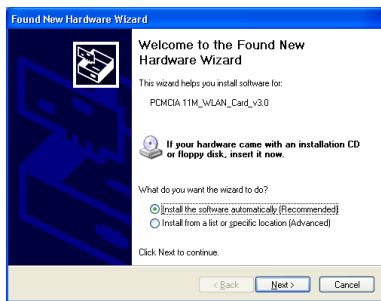
ZyAIR B-100 Quick Installation Guide

LINK

Indicates link status. The LED lights up (solid green) while the wireless connection is linked. If the LED is blinking green, the B-100 adapter is searching for possible wireless connections.

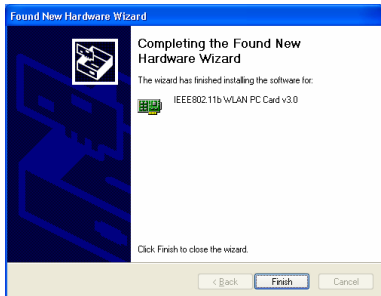
Driver installation for Windows XP

1. Insert the B-100 Wireless PC Card into the computer's PCMCIA slot.
2. After Windows **XP** detects the card, the *Found New Hardware Wizard* window appears. Select **Install the software automatically [Recommended]** and insert the driver CD-ROM into the CD-ROM drive and click **Next** to continue.



ZyAIR B-100 Quick Installation Guide

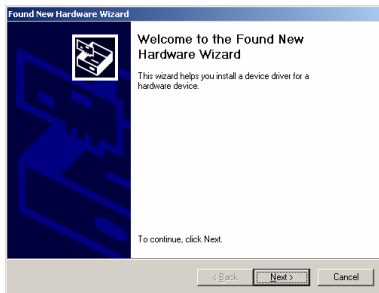
3. Windows copies files to the hard disk. The following screen appears when the software is installed. Click **Finish** to finish the installation.
4. The system will then automatically start to install the Wireless LAN Utility. Please refer to the procedures in Chapter 4 of the User's Manual on the CD-ROM.



ZyAIR B-100 Quick Installation Guide

Driver installation for Windows 2000

1. Insert the B-100 Wireless PC Card into the computer's PCMCIA slot.
2. After Windows 2000 detects the card, the *Found New Hardware Wizard* window appears. Click **Next** to start the installation.



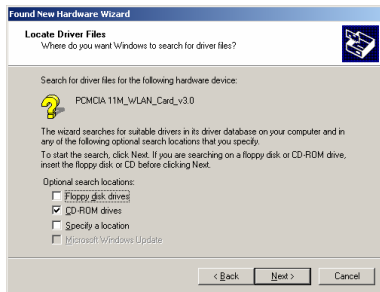
ZyAIR B-100 Quick Installation Guide

3. A screen appears prompting the user to select an installation method. Select **Search for a suitable driver for my device (recommended)** and click **Next** to continue.



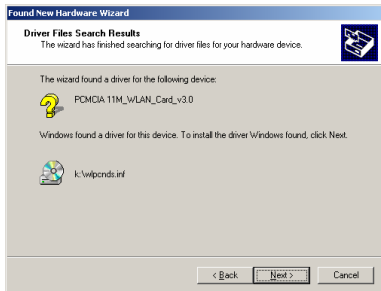
ZyAIR B-100 Quick Installation Guide

4. Ensure that the **CD-ROM driver** is selected. Insert the driver CD-ROM into the CD- ROM drive and click **Next** to continue.

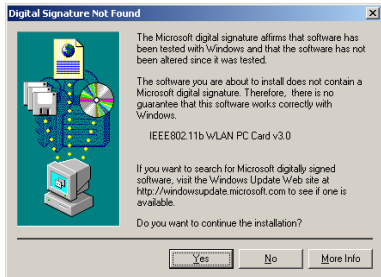


ZyAIR B-100 Quick Installation Guide

5. The following screen appears showing the driver search results. Click **Next** to continue the installation.



6. The common Windows Digital Signature screen will appear. The Microsoft digital signature is not required for operation of the ZyAIR B-100. Simply click **Yes** to continue.



ZyAIR B-100 Quick Installation Guide

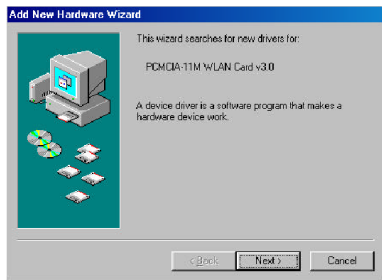
7. Windows has finished installing software for B-100. Click **Finish** to finish the installation.
8. The system will then automatically start to install the WLAN Utility. Refer Chapter 4 of the User's Manual on CD-ROM.



ZyAIR B-100 Quick Installation Guide

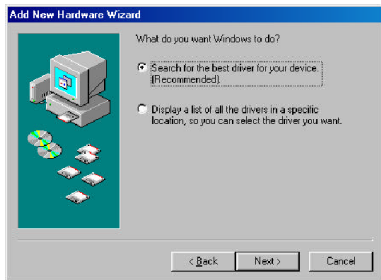
Driver installation for Windows 98

1. Insert the B-100 Wireless PC Card into the computer's PCMCIA slot.
2. After Windows 98 detects the B-100 Wireless PC Card, the Add New Hardware Wizard window appears. Click **Next** to continue the installation.



ZyAIR B-100 Quick Installation Guide

3. A screen appears prompting the user to select an installation method. Select Search for the best driver for your device. (Recommended) and click **Next** to continue.



ZyAIR B-100 Quick Installation Guide

4. Ensure that the CD-ROM drive is selected. Insert the driver CD-ROM into the CD-ROM drive and click **Next** to continue.

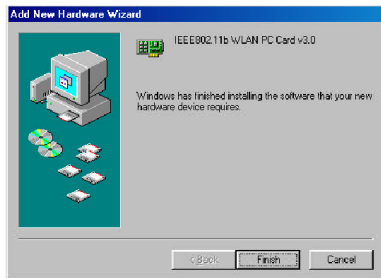


ZyAIR B-100 Quick Installation Guide

5. The following screen appears showing the driver search results. Click **Next** to continue the installation.

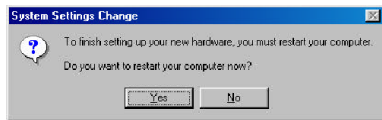


6. Windows 98 copies the files to the hard disk. The following screen will appear when the software installation has finished. Click **Finish** to finish the installation.



ZyAIR B-100 Quick Installation Guide

7. The following screen will ask the user to restart the computer to finish the installation. Click **Yes** to reboot the system. After the system reboot, the Wireless LAN Utility will be installed automatically. Please go to Chapter 4 of the user's manual to install the utility.



ZyAIR B-100 Quick Installation Guide

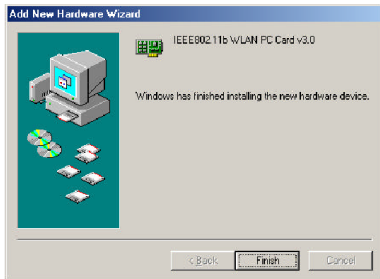
Driver installation for ME

1. Insert the B-100 Wireless PC Card into the computer's PCMCIA slot.
2. After Windows ME detects the B-100 Wireless PC Card, the Add New Hardware Wizard window appears. Select Automatic search for a better driver (Recommended). Insert the driver CD-ROM into CD-ROM drive and click **Next** to continue.

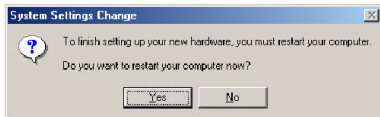


ZyAIR B-100 Quick Installation Guide

3. The system locates the setup files. Follow the instructions to copy the files onto the hard disk. The following screen will appear when the software installation has finished. Click **Finish** to finish the installation.



4. The following screen will ask the user to restart the computer to finish the hardware setup. Click **Yes** to reboot the system. After the system reboot, the Wireless LAN Utility will be installed automatically. Please go to Chapter 4 to install the



ZyAIR B-100 Quick Installation Guide

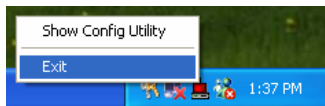
utility.

Using the Wireless Utility in Windows XP

There are two ways to configure the ZyAIR B-100 Wireless PC Card in Windows XP. One is the **Wireless LAN Utility**; the other one is the **Windows Wireless Network Configuration**. To switch between those two ways, the user must enable or disable the Windows Wireless Network Configuration.

Enable Windows Wireless Network Configuration

1. Click the right key of the mouse and Exit Wireless LAN Utility.



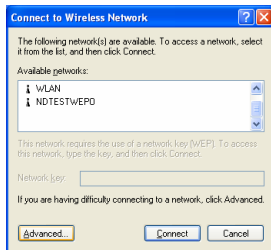
2. Click the Windows Wireless Network Configuration icon.



ZyAIR B-100 Quick Installation Guide

Windows Wireless Network Configuration

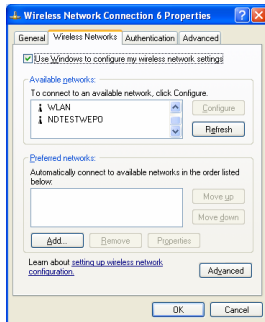
3. Click the **Advanced** button.



ZyAIR B-100 Quick Installation Guide

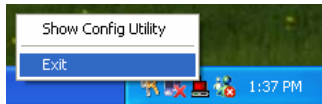
4. Make sure the “Use Windows to configure my wireless network settings” is checked and click **OK**.

Notice: For details on using the Windows Wireless Network Configuration, please refer to Microsoft Windows XP on-line help.



Disable and Use Wireless LAN Utility

1. Click the right key of the mouse and Exit Wireless LAN Utility.



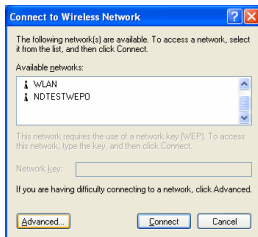
ZyAIR B-100 Quick Installation Guide

2. Click Windows Wireless Network Configuration icon.



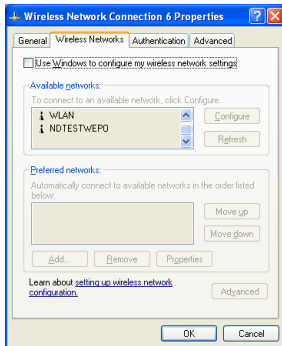
Windows Wireless Network Configuration

3. Click the **Advanced** button.



ZyAIR B-100 Quick Installation Guide

4. Make sure the “Use Windows to configure my wireless network settings” is unchecked and click the **OK** button.



ZyAIR B-100 Quick Installation Guide

5. Click Start -> All Programs -> IEEE802.11b WLAN Card -> IEEE802.11b WLAN Card Utility to restart the IEEE802.11b WLAN Card Utility.



6. The Wireless LAN Utility will appear, Double-click the icon to open the configuration utility.



Wireless LAN Utility

ZyAIR B-100 Quick Installation Guide

7. Click the **Re-Scan** button to start the Wireless LAN Utility. Please refer to the procedures at Configuring the PCMCIA Wireless LAN Card in the User's Manual on the CD-ROM.

